



# MASTER LEDtube InstantFit HF T5

## Master LEDtube HF 1500mm HO 26W 840 T5 OE

Philips MASTER LEDtube InstantFit T5 integrates a LED light source into a traditional fluorescent form factor. Its unique design creates a perfectly uniform visual appearance which cannot be distinguished from traditional fluorescents. The Philips MASTER LEDtube InstantFit T5 is the ideal solution for customers who have higher light output requirements and want to maximise value over the lifetime. The full energy savings & longer lifetime result in attractive payback times and TCO benefits.

### Product data

General Information	
Cap base	G5 [ G5]
EU RoHS compliant	Yes
Nominal lifetime (nom.)	60000 h
Switching cycle	50,000X
Technical type	26-49W

Light Technical	
Colour Code	840 [ CCT of 4,000 K]
Technical Beam Angle (Nom)	200 °
Lamp Luminous Flux 25°C EL (Nom)	3900 lm
Colour Designation	Cool White (CW)
Colour Temperature, horizontal (Nom)	4000 K
Lamp Luminous Efficacy EM (Nom)	150.00 lm/W
Colour consistency	<6
Colour Rendering Index,horiz (Nom)	80
LLMF at end of nominal lifetime (nom.)	70 %

Operating and Electrical	
Input frequency	20 K to 140 K Hz
Power (Rated) (Nom)	26 W
Lamp current (max.)	420 mA
Lamp current (min.)	150 mA
Starting time (nom.)	0.5 s
Warm-up time to 60% light (nom.)	0.5 s
Power factor (nom.)	0.9
Voltage (Nom)	60-120 V

Temperature	
T-ambient (max.)	45 °C
T-ambient (min.)	-20 °C
T storage (max.)	65 °C
T storage (min.)	-40 °C
T-Case maximum (nom.)	50 °C

# MASTER LEDtube InstantFit HF T5

## Controls and Dimming

**Dimmable** Yes – Check ballast compatibility

## Mechanical and Housing

**Lamp Finish** Frosted  
**Bulb material** Glass  
**Product length** 1500 mm

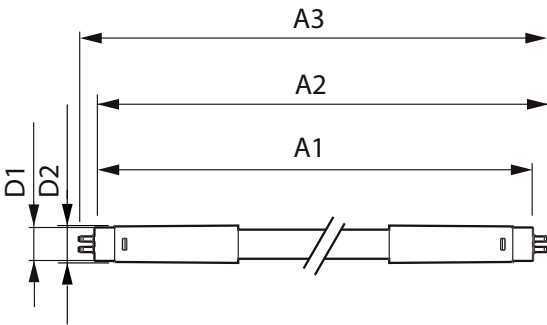
## Approval and Application

**Energy efficiency label (EEL)** A++  
**Energy-saving product** Yes  
**Approval marks** RoHS compliance CE marking KEMA Keur certificate  
**Energy consumption kWh/1,000 hours** 31 kWh

## Product Data

**Full product code** 871869974959000  
**Order product name** Master LEDtube HF 1500mm HO 26W 840 T5 OE  
**EAN/UPC – product** 8718699749590  
**Order code** 929002352402  
**SAP numerator – quantity per pack** 1  
**Numerator – packs per outer box** 10  
**Material no. (12 NC)** 929002352402  
**SAP net weight (piece)** 0.380 kg

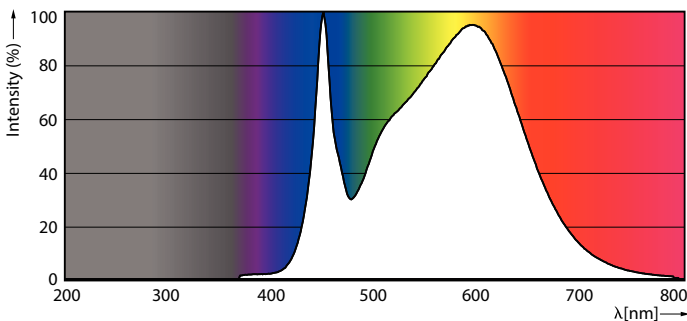
## Dimensional drawing



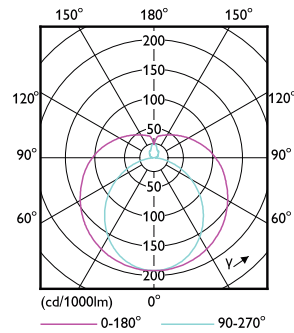
TLED 1500mm HF 26W 3900lm 4000K G5

Product	D1	D2	A1	A2	A3
Master LEDtube HF 1500mm HO 26W 840 T5 OE	15.5 mm	19 mm	1449 mm	1456 mm	1463 mm

## Photometric data



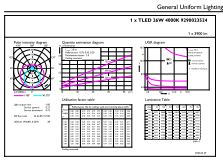
LEDtube MAS 26W G5 3900lm 840



LEDtube MAS 26W G5 3700lm

# MASTER LEDtube InstantFit HF T5

## Photometric data



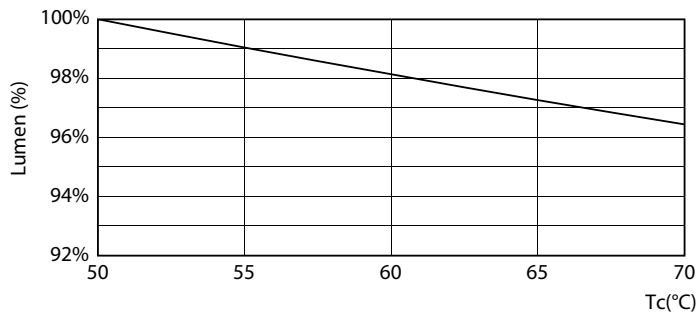
© 2021 Philips Lighting B.V. Page 10

LEDtube MAS 26W G5 3900lm 840 1500mm

## Lifetime



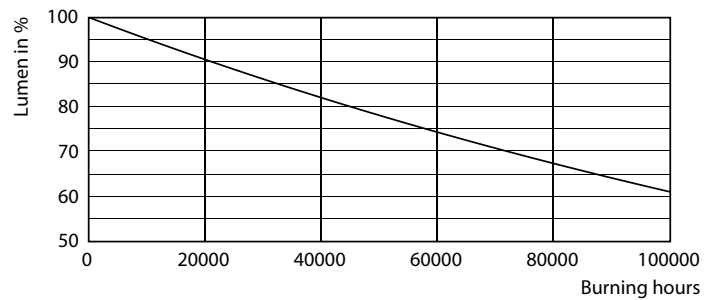
LEDtube\_60K\_FailureRate



LEDtube 26W 60K LumenVsTc 2



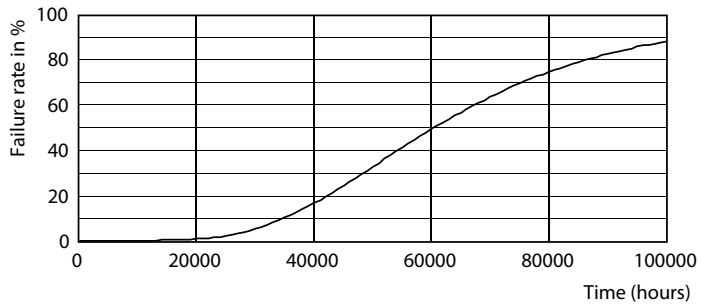
LEDtube\_60K\_LifetimeVsTc



LEDtube\_60K

# MASTER LEDtube InstantFit HF T5

## Lifetime



LEDtube\_60K

