



MASTER LEDtube EM/ Mains

MASTER LEDtube 1500mm UO 23W 840 T8

The Philips MASTER LEDtube integrates a LED light source into a traditional fluorescent form factor. Its unique design creates a perfectly uniform visual appearance which cannot be distinguished from traditional fluorescent. This product is the ideal solution for up lighting in general lighting applications.

Warnings and Safety

• -

Product data

General Information		Operating and Electrical	
Cap base	G13 ROT (Rotating) [Medium Bi-Pin Fluorescent]	Input frequency	50 to 60 Hz
EU RoHS compliant	Yes	Power (Rated) (Nom)	23 W
Nominal lifetime (nom.)	60000 h	Lamp current (max.)	108 mA
Switching cycle	200,000X	Lamp current (min.)	99 mA
Light Technical		Starting time (nom.)	0.5 s
Colour Code	840 [CCT of 4,000 K]	Warm-up time to 60% light (nom.)	0.5 s
Technical Beam Angle (Nom)	160 °	Power factor (nom.)	0.9
Lamp Luminous Flux 25°C EL (Nom)	3700 lm	Voltage (Nom)	220-240 V
Colour Designation	Cool White (CW)	Temperature	
Colour Temperature, horizontal (Nom)	4000 K	T-ambient (max.)	45 °C
Lamp Luminous Efficacy EM (Nom)	160.00 lm/W	T-ambient (min.)	-20 °C
Colour consistency	<6	T storage (max.)	65 °C
Colour Rendering Index,horiz (Nom)	83	T storage (min.)	-40 °C
LLMF at end of nominal lifetime (nom.)	70 %	T-Case maximum (nom.)	60 °C

MASTER LEDtube EM/Mains

Controls and Dimming

Dimmable No

Mechanical and Housing

Bulb material Plastic

Product length 1500 mm

Approval and Application

Energy efficiency label (EEL) A++

Energy-saving product Yes

Approval marks RoHS compliance CE marking KEMA Keur certificate

Energy consumption kWh/1,000 hours 23 kWh

Product Data

Full product code 871869964729200

Order product name MASTER LEDtube 1500mm UO 23W 840 T8

EAN/UPC – product 8718699647292

Order code 929002020902

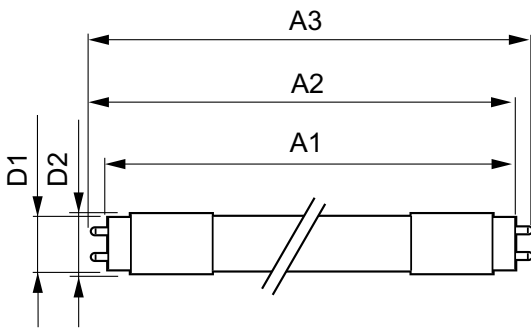
Numerator – quantity per pack 1

SAP numerator – packs per outer box 10

Material no. (12 NC) 929002020902

SAP net weight (piece) 0.310 kg

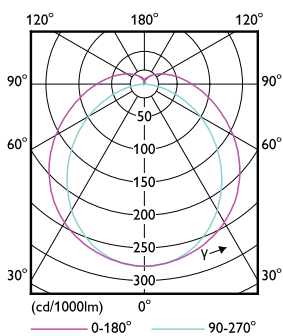
Dimensional drawing



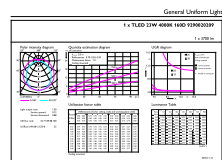
TLED 5ft 220-240V 23-58W 3700lm4000K G13

Product	D1	D2	A1	A2	A3
MASTER LEDtube 1500mm UO 23W 840 T8	25.8 mm	28 mm	1498.7 mm	1505.8 mm	1512.9 mm

Photometric data



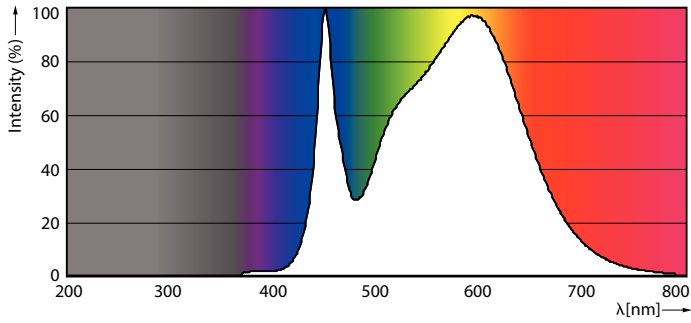
TLED_5ft_220-240V_23-58W_G13



TLED_5ft_220-240V_23-58W_3700lm_4000K_G13

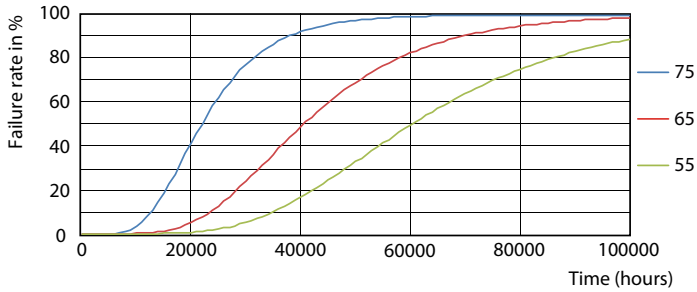
MASTER LEDtube EM/Mains

Photometric data

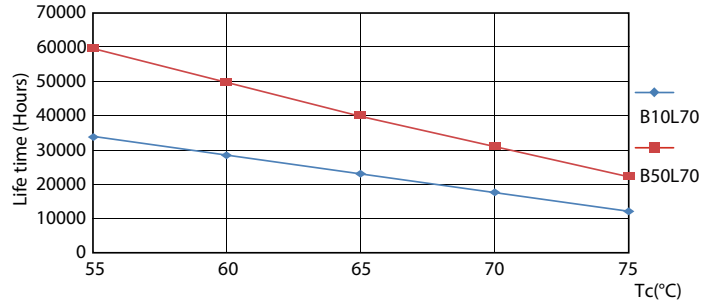


TLED_5ft_220-240V_23-58W_3700lm_4000K_G13

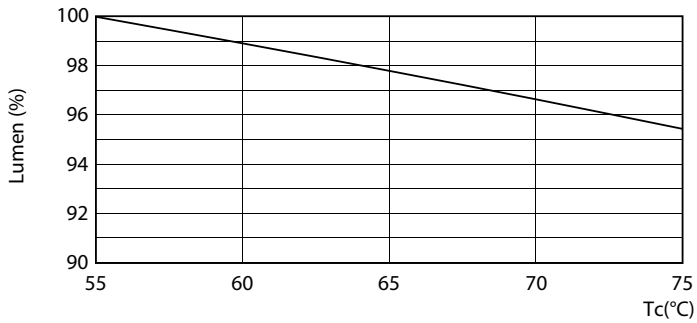
Lifetime



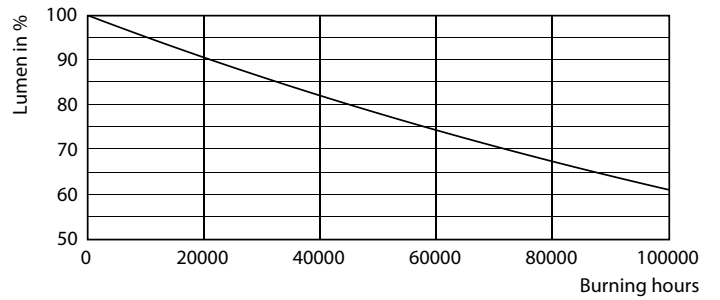
TLED_220-240V_G13-FailureRate



TLED_220-240V_G13-LifetimeVsTc



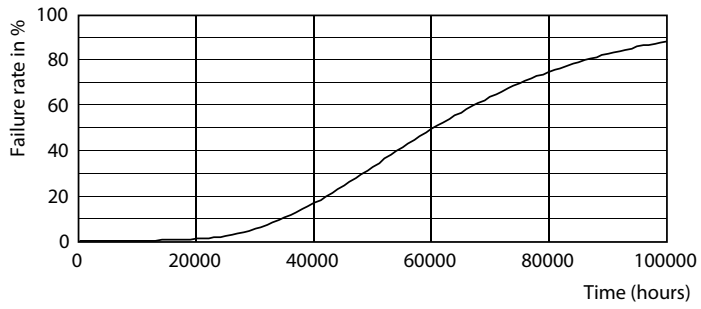
TLED_220-240V_G13-LumenVsTc



TLED_220-240V_G13

MASTER LEDtube EM/Mains

Lifetime



TLED_220-240V_G13

