



MASTER LEDtube EM/ Mains

MASTER LEDtube 1200mm UO 15.5W 840 T8

The Philips MASTER LEDtube integrates a LED light source into a traditional fluorescent form factor. Its unique design creates a perfectly uniform visual appearance which cannot be distinguished from traditional fluorescent. This product is the ideal solution for up lighting in general lighting applications.

Warnings and Safety

• -

Product data

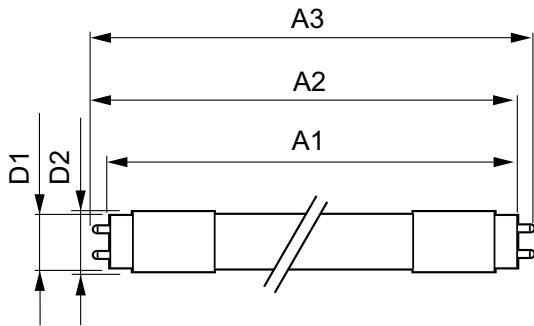
General Information		Operating and Electrical	
Cap base	G13 ROT (Rotating) [Medium Bi-Pin Fluorescent]	Input frequency	50 to 60 Hz
EU RoHS compliant	Yes	Power (Rated) (Nom)	15.5 W
Nominal lifetime (nom.)	60000 h	Lamp current (max.)	73 mA
Switching cycle	200,000X	Lamp current (min.)	67 mA
Light Technical		Starting time (nom.)	0.5 s
Colour Code	840 [CCT of 4,000 K]	Warm-up time to 60% light (nom.)	0.5 s
Technical Beam Angle (Nom)	160 °	Power factor (nom.)	0.9
Lamp Luminous Flux 25°C EL (Nom)	2500 lm	Voltage (Nom)	220-240 V
Colour Designation	Cool White (CW)	Temperature	
Colour Temperature, horizontal (Nom)	4000 K	T-ambient (max.)	45 °C
Lamp Luminous Efficacy EM (Nom)	161.00 lm/W	T-ambient (min.)	-20 °C
Colour consistency	<6	T storage (max.)	65 °C
Colour Rendering Index,horiz (Nom)	83	T storage (min.)	-40 °C
LLMF at end of nominal lifetime (nom.)	70 %	T-Case maximum (nom.)	55 °C

MASTER LEDtube EM/Mains

Controls and Dimming	
Dimmable	No
Mechanical and Housing	
Bulb material	Plastic
Product length	1200 mm
Approval and Application	
Energy efficiency label (EEL)	A++
Energy-saving product	Yes
Approval marks	RoHS compliance CE marking KEMA Keur certificate
Energy consumption kWh/1,000 hours	16 kWh

Product Data	
Full product code	871869964723000
Order product name	MASTER LEDtube 1200mm UO 15.5W 840 T8
EAN/UPC – product	8718699647230
Order code	929002020602
Numerator – quantity per pack	1
SAP numerator – packs per outer box	10
Material no. (12 NC)	929002020602
SAP net weight (piece)	0.251 kg

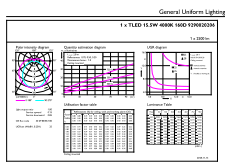
Dimensional drawing



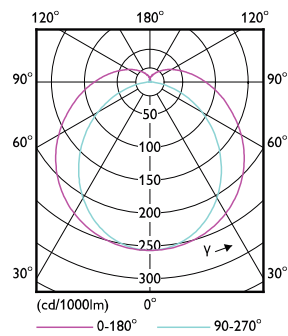
TLED 4ft 220-240V15.5-36W 2500lm4000KG13

Product	D1	D2	A1	A2	A3
MASTER LEDtube 1200mm UO 15.5W 840 T8	25.8 mm	28 mm	1198.2 mm	1205.3 mm	1212.4 mm

Photometric data



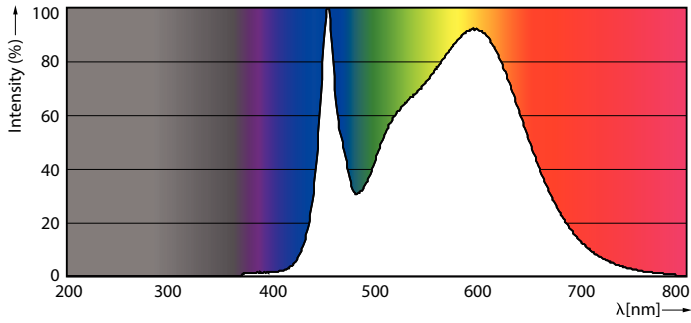
TLED_4ft_220-240V15.5-36W_2500lm_4000K_G13



TLED_4ft_220-240V15.5-36W_G13-LDD

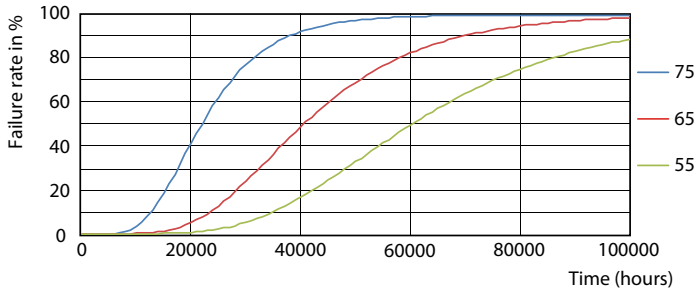
MASTER LEDtube EM/Mains

Photometric data

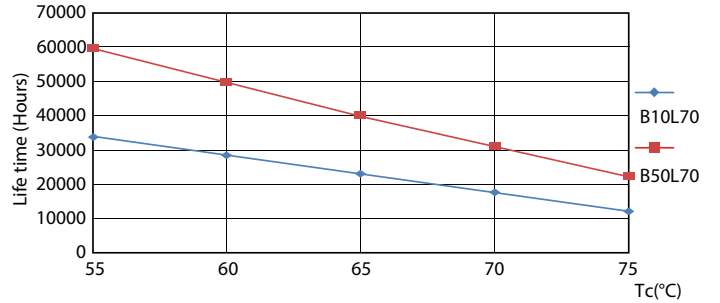


TLED_4ft_220-240V15.5-36W_2500lm_4000K_G13

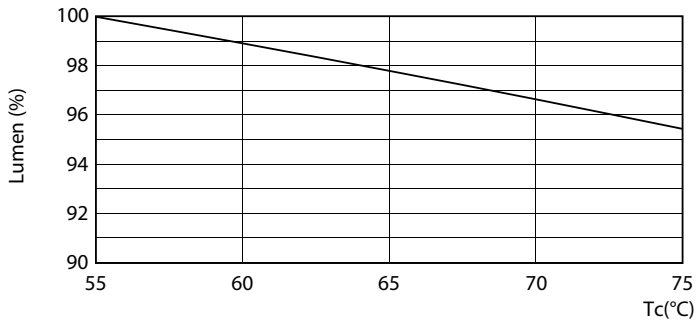
Lifetime



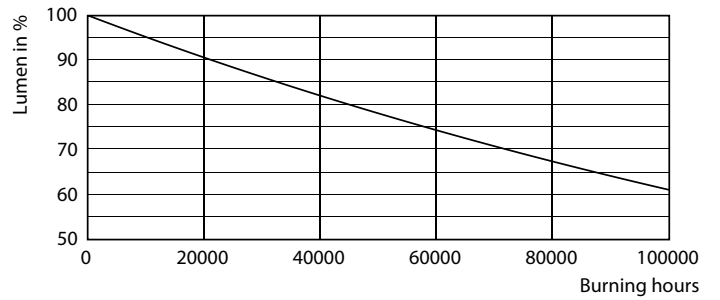
TLED_220-240V_G13-FailureRate



TLED_220-240V_G13-LifetimeVsTc



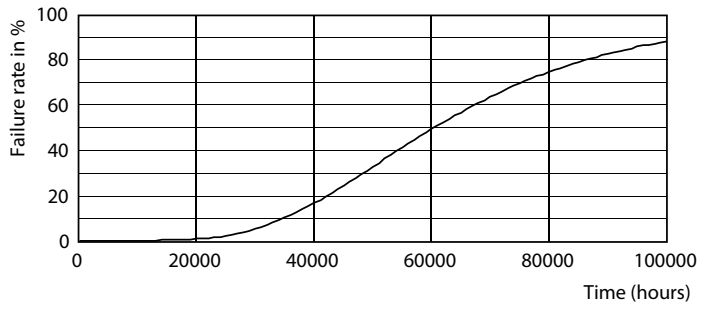
TLED_220-240V_G13-LumenVsTc



TLED_220-240V_G13

MASTER LEDtube EM/Mains

Lifetime



TLED_220-240V_G13

