



# MASTER LEDtube EM/ Mains

## MASTER LEDtube 1500mm HO 18.2W 865 T8

The Philips MASTER LEDtube integrates a LED light source into a traditional fluorescent form factor. Its unique design creates a perfectly uniform visual appearance which cannot be distinguished from traditional fluorescent. This product is the ideal solution for up lighting in general lighting applications.

### Warnings and Safety

• -

### Product data

General Information	
Cap base	G13 ROT (Rotating) [ Medium Bi-Pin Fluorescent]
EU RoHS compliant	Yes
Nominal lifetime (nom.)	60000 h
Switching cycle	200,000X

Light Technical	
Colour Code	865 [ CCT of 6,500 K]
Technical Beam Angle (Nom)	160 °
Lamp Luminous Flux 25°C EL (Nom)	3100 lm
Colour Designation	Cool Daylight
Colour Temperature, horizontal (Nom)	6500 K
Lamp Luminous Efficacy EM (Nom)	170.00 lm/W
Colour consistency	<6
Colour Rendering Index,horiz (Nom)	83
LLMF at end of nominal lifetime (nom.)	70 %

Operating and Electrical	
Input frequency	50 to 60 Hz
Power (Rated) (Nom)	18.2 W
Lamp current (max.)	87 mA
Lamp current (min.)	79 mA
Starting time (nom.)	0.5 s
Warm-up time to 60% light (nom.)	0.5 s
Power factor (nom.)	0.9
Voltage (Nom)	220-240 V

Temperature	
T-ambient (max.)	45 °C
T-ambient (min.)	-20 °C
T storage (max.)	65 °C
T storage (min.)	-40 °C
T-Case maximum (nom.)	55 °C

# MASTER LEDtube EM/Mains

## Controls and Dimming

Dimmable	No
----------	----

## Mechanical and Housing

Bulb material	Plastic
Product length	1500 mm

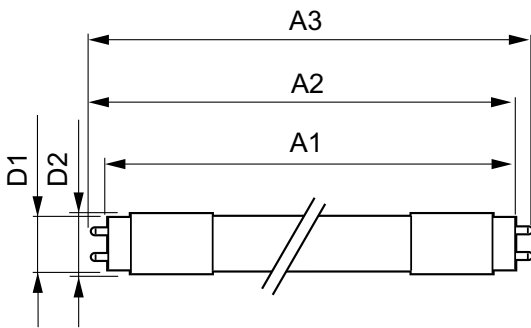
## Approval and Application

Energy efficiency label (EEL)	A++
Energy-saving product	Yes
Approval marks	RoHS compliance CE marking KEMA Keur certificate
Energy consumption kWh/1,000 hours	19 kWh

## Product Data

Full product code	871869959245500
Order product name	MASTER LEDtube 1500mm HO 18.2W 865 T8
EAN/UPC – product	8718699592455
Order code	929001923102
Numerator – quantity per pack	1
SAP numerator – packs per outer box	10
Material no. (12 NC)	929001923102
SAP net weight (piece)	0.310 kg

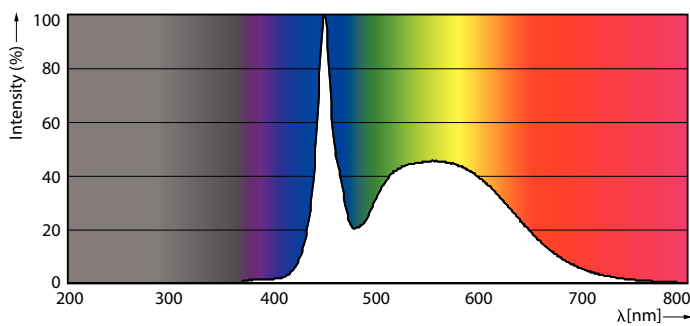
## Dimensional drawing



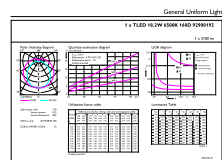
TLED master HE 3100lm 18.2w 5ft 6500k

Product	D1	D2	A1	A2	A3
MASTER LEDtube 1500mm HO 18.2W 865 T8	25.8 mm	28 mm	1498.8 mm	1505.9 mm	1513 mm

## Photometric data



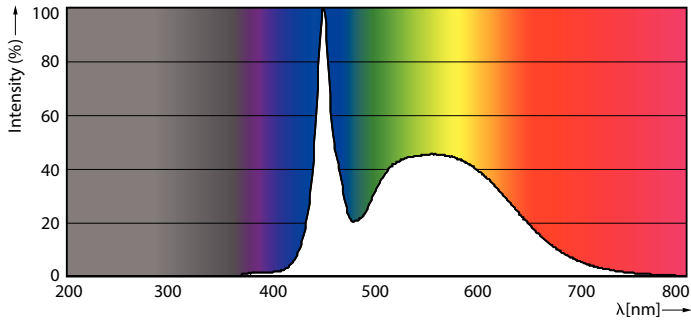
LEDtube T8 MAS HO G13 865



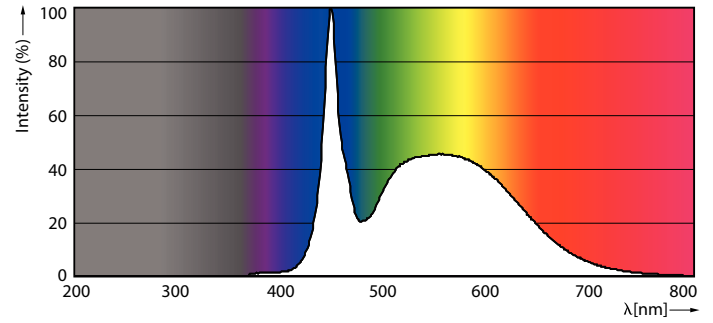
LEDtube MAS HO 18.2W G13 865 16D ND

# MASTER LEDtube EM/Mains

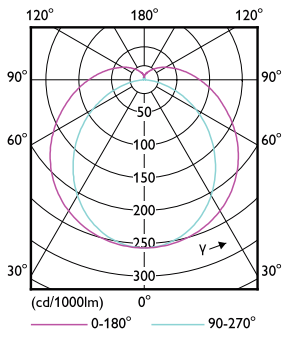
## Photometric data



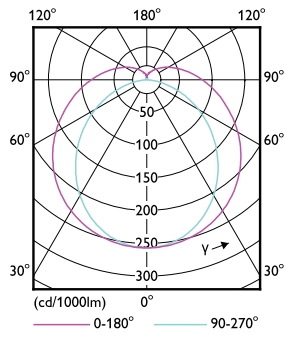
LEDtube MAS HO G13 865



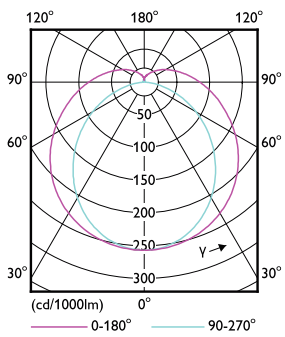
LEDtube MAS HO 12.5W G13 865 16D ND



LEDtube MAS HO G13



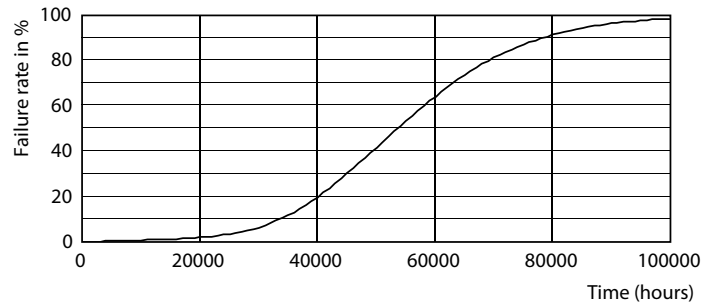
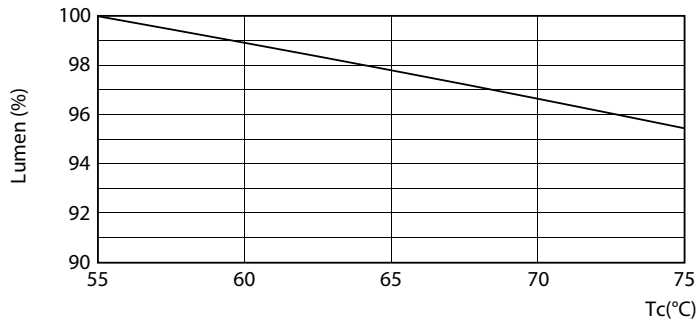
LEDtube T8 MAS HO G13



LEDtube MAS HO 12.5W G13 830 16D ND

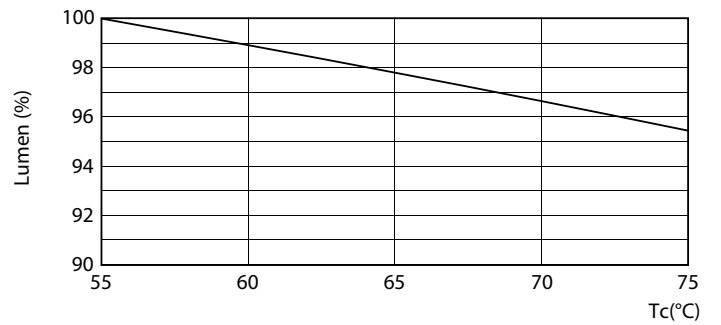
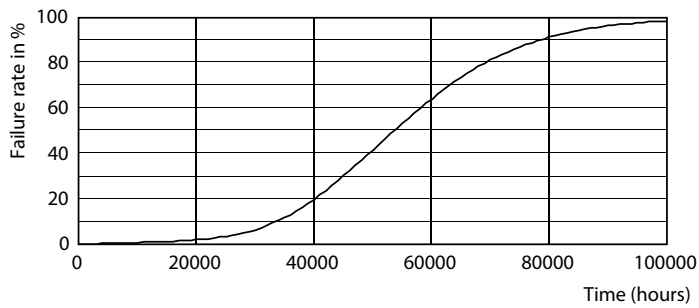
# MASTER LEDtube EM/Mains

## Lifetime



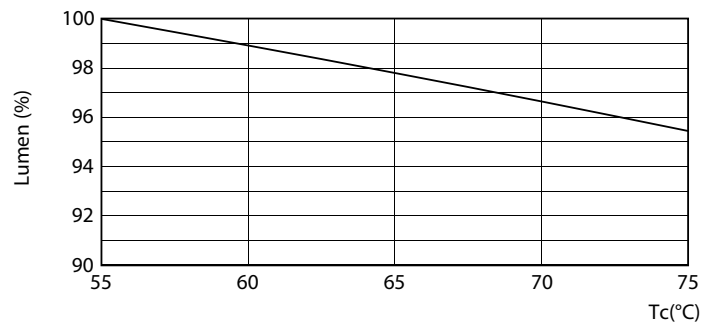
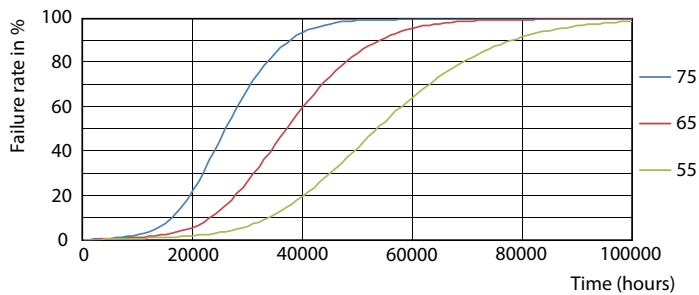
LEDtube T8 MAS HO 18.2W G13

LEDtube MAS HO G13



LEDtube T8 MAS HO G13

LEDtube MAS HO 18.2W G13 830 16D ND

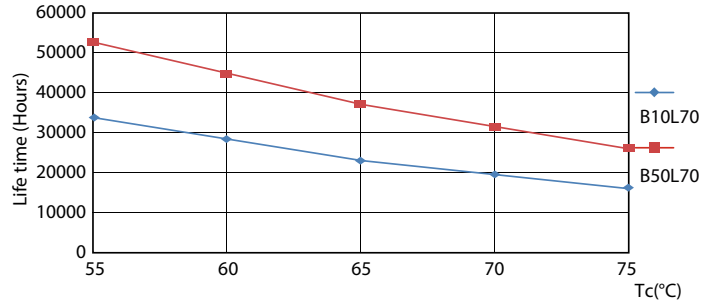
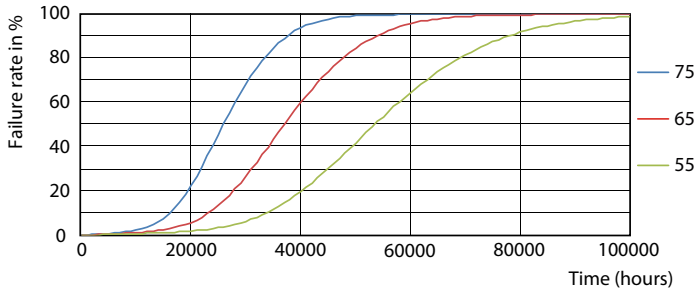


LEDtube MAS HO G13

LEDtube MAS HO 18.2W G13

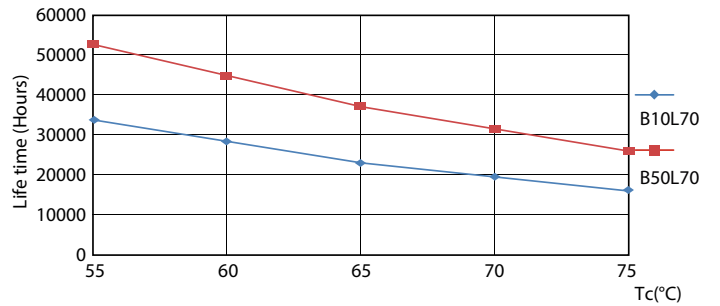
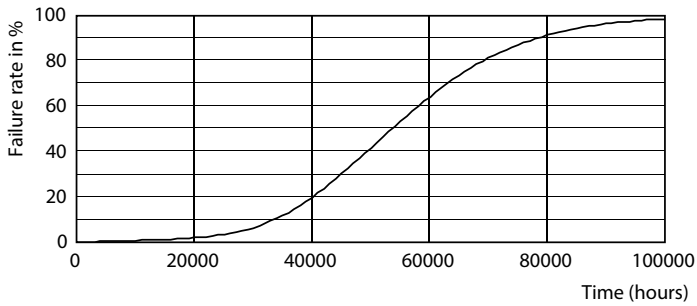
# MASTER LEDtube EM/Mains

## Lifetime



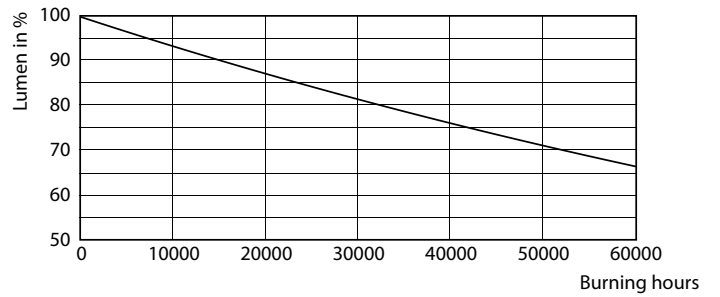
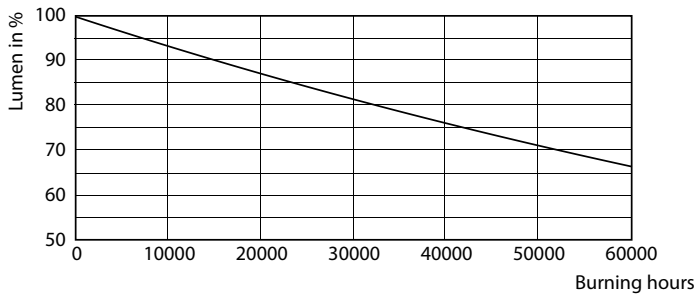
LEDtube MAS HO 12.5W G13 830 16D ND

LEDtube T8 MAS HO G13



LEDtube MAS HO 12.5W G13 830 16D ND

LEDtube MAS HO 12.5W G13 830 16D ND

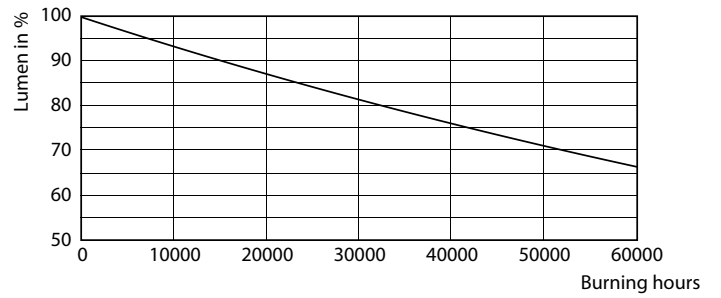
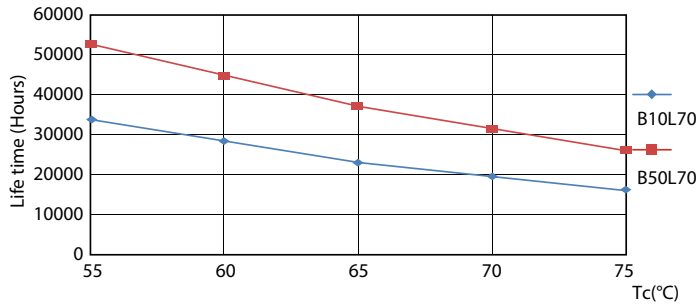


LEDtube MAS HO G13

LEDtube T8 MAS HO G13

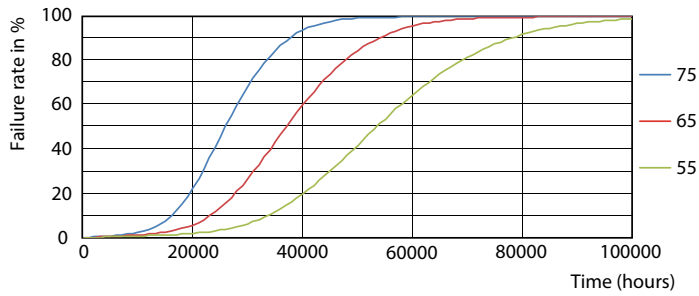
# MASTER LEDtube EM/Mains

## Lifetime



### LEDtube MAS HO G13

### LEDtube MAS HO G13



### LEDtube T8 MAS HO G13

