



MASTER LEDtube EM/ Mains

MASTER LEDtube 1500mm HO 18.2W 840 T8

The Philips MASTER LEDtube integrates a LED light source into a traditional fluorescent form factor. Its unique design creates a perfectly uniform visual appearance which cannot be distinguished from traditional fluorescent. This product is the ideal solution for up lighting in general lighting applications.

Warnings and Safety

• -

Product data

General Information	
Cap base	G13 ROT (Rotating) [Medium Bi-Pin Fluorescent]
EU RoHS compliant	Yes
Nominal lifetime (nom.)	60000 h
Switching cycle	200,000X
Light Technical	
Colour Code	840 [CCT of 4,000 K]
Technical Beam Angle (Nom)	160 °
Lamp Luminous Flux 25°C EL (Nom)	3100 lm
Colour Designation	Cool White (CW)
Colour Temperature, horizontal (Nom)	4000 K
Lamp Luminous Efficacy EM (Nom)	170.00 lm/W
Colour consistency	<6
Colour Rendering Index,horiz (Nom)	83
LLMF at end of nominal lifetime (nom.)	70 %

Operating and Electrical	
Input frequency	50 to 60 Hz
Power (Rated) (Nom)	18.2 W
Lamp current (max.)	87 mA
Lamp current (min.)	79 mA
Starting time (nom.)	0.5 s
Warm-up time to 60% light (nom.)	0.5 s
Power factor (nom.)	0.9
Voltage (Nom)	220-240 V
Temperature	
T-ambient (max.)	45 °C
T-ambient (min.)	-20 °C
T storage (max.)	65 °C
T storage (min.)	-40 °C
T-Case maximum (nom.)	55 °C

MASTER LEDtube EM/Mains

Controls and Dimming

Dimmable	No
----------	----

Mechanical and Housing

Bulb material	Plastic
Product length	1500 mm

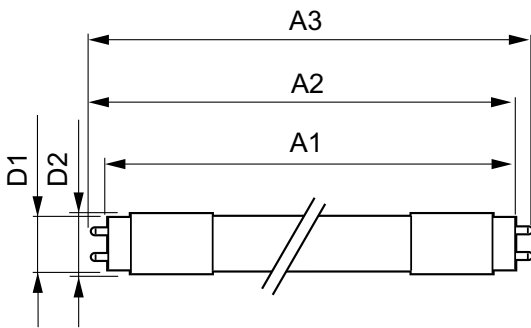
Approval and Application

Energy efficiency label (EEL)	A++
Energy-saving product	Yes
Approval marks	RoHS compliance CE marking KEMA Keur certificate
Energy consumption kWh/1,000 hours	19 kWh

Product Data

Full product code	871869959243100
Order product name	MASTER LEDtube 1500mm HO 18.2W 840 T8
EAN/UPC – product	8718699592431
Order code	929001923002
Numerator – quantity per pack	1
SAP numerator – packs per outer box	10
Material no. (12 NC)	929001923002
SAP net weight (piece)	0.310 kg

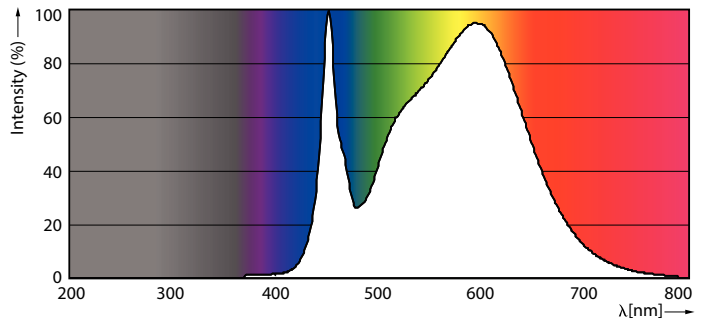
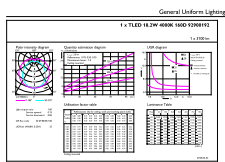
Dimensional drawing



TLED master HE 3100lm 18.2w 5ft 4000k

Product	D1	D2	A1	A2	A3
MASTER LEDtube 1500mm HO 18.2W 840 T8	25.8 mm	28 mm	1498.8 mm	1505.9 mm	1513 mm

Photometric data

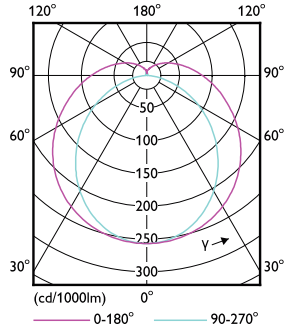
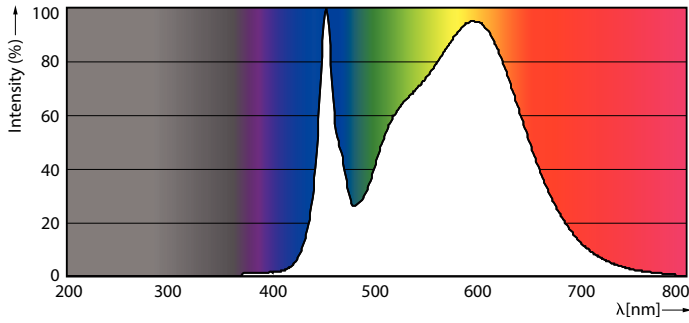


LEDtube MAS HO 18.2W G13 840 16D ND

LEDtube MAS HO G13

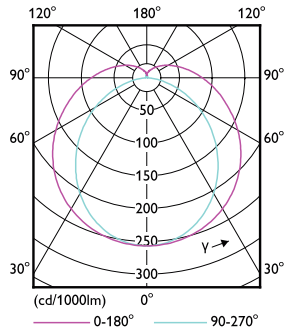
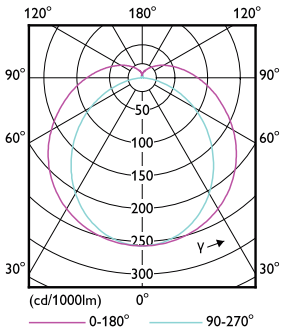
MASTER LEDtube EM/Mains

Photometric data



LEDtube MAS HO 12.5W G13 840 16D ND

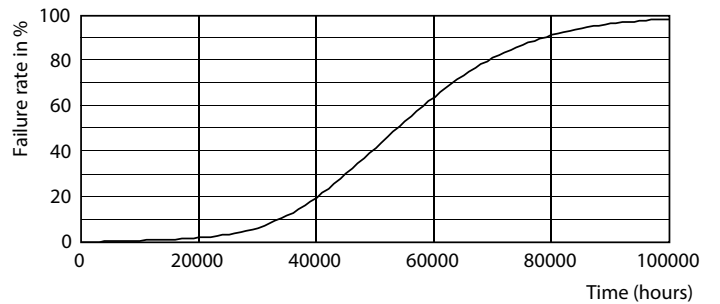
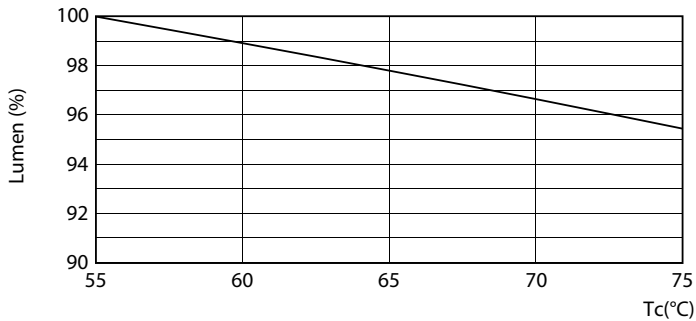
LEDtube MAS HO G13



LEDtube T8 MAS HO G13

LEDtube MAS HO 12.5W G13 830 16D ND

Lifetime

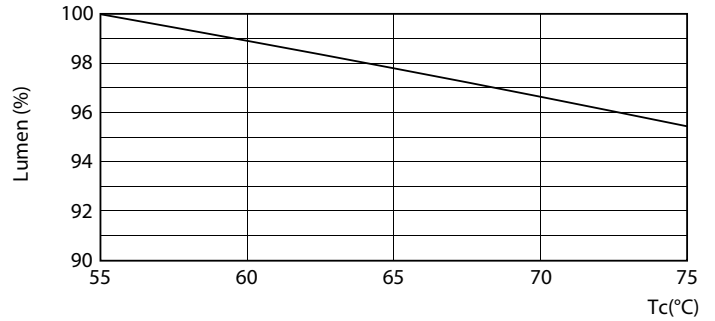
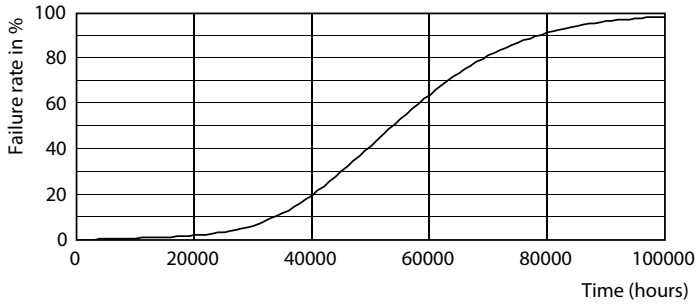


LEDtube T8 MAS HO 18.2W G13

LEDtube MAS HO G13

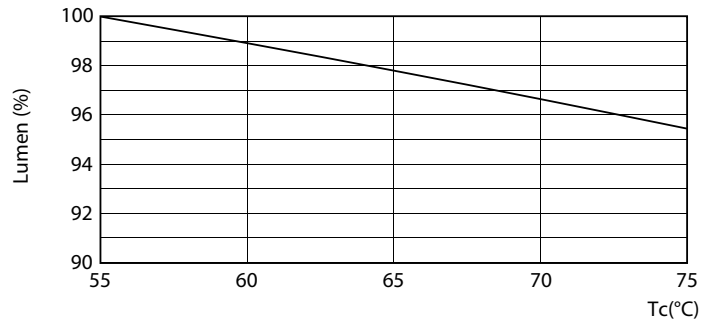
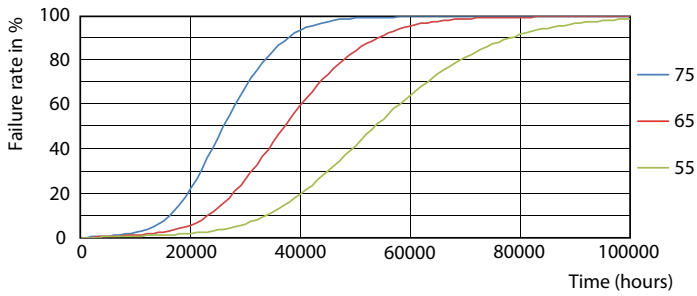
MASTER LEDtube EM/Mains

Lifetime



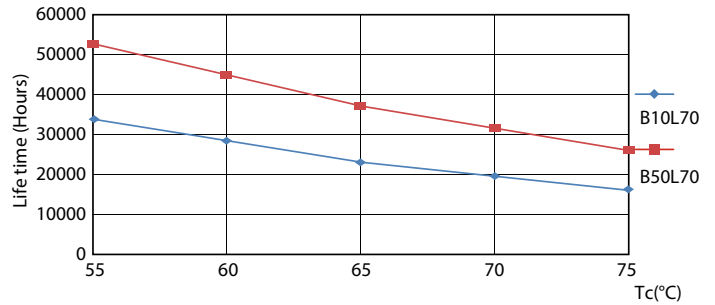
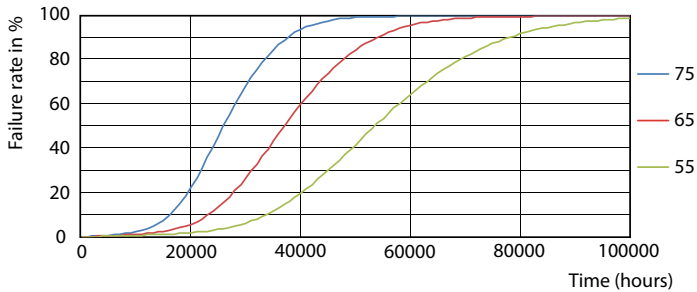
LEDtube T8 MAS HO G13

LEDtube MAS HO 18.2W G13 830 16D ND



LEDtube MAS HO G13

LEDtube MAS HO 18.2W G13

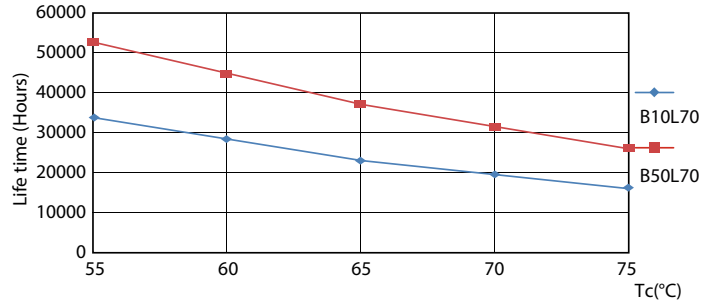
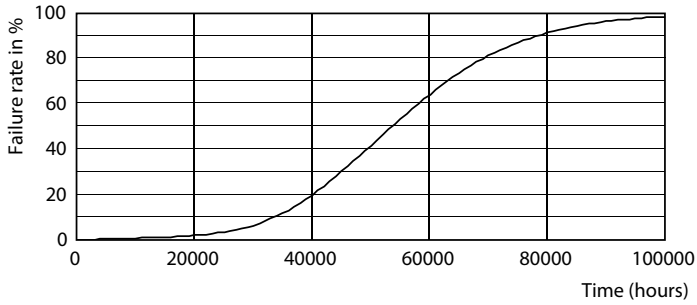


LEDtube MAS HO 12.5W G13 830 16D ND

LEDtube T8 MAS HO G13

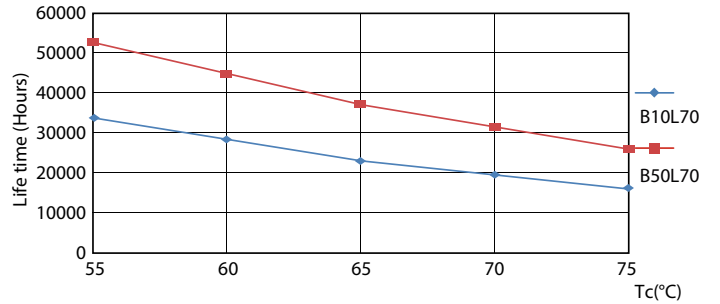
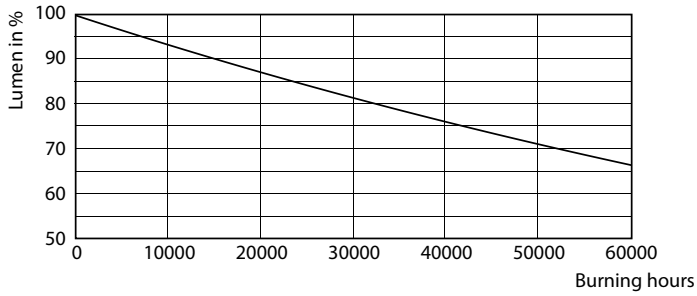
MASTER LEDtube EM/Mains

Lifetime



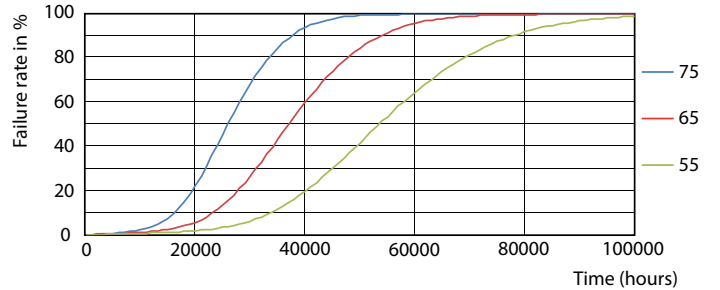
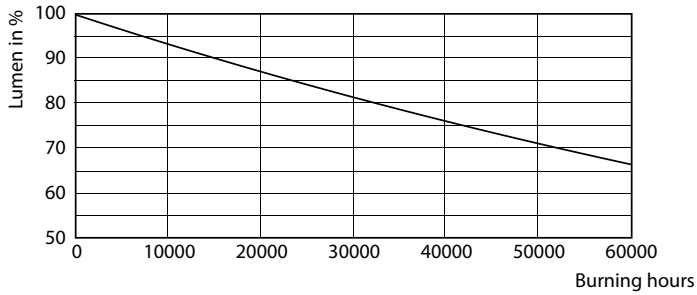
LEDtube MAS HO 12.5W G13 830 16D ND

LEDtube MAS HO 12.5W G13 830 16D ND



LEDtube T8 MAS HO G13

LEDtube MAS HO G13



LEDtube MAS HO G13

LEDtube T8 MAS HO G13

MASTER LEDtube EM/Mains

