



# MASTER LEDtube Mains T5

## MASTER LEDtube 1500mm HO 26W 840 T5

The new Philips Master LEDtube Mains T5 brings simplicity to your lighting project. You don't need to pay attention to the driver technology anymore. Thanks to a unique design, Philips MASTER LEDtube Mains T5 installs in luminaires operating on mains power connection. So simple to operate! Perfectly safe, reliable & easy to install, the Philips MASTER LEDtube Mains T5 is the ideal alternative to standard fluorescent tubes to maximise value over lifetime with high energy savings and lower maintenance costs.

### Product data

General Information		Operating and Electrical	
Cap base	G5 [ G5]	Input frequency	50 to 60 Hz
EU RoHS compliant	Yes	Power (Rated) (Nom)	26 W
Nominal lifetime (nom.)	50000 h	Starting time (nom.)	0.5 s
Switching cycle	200,000X	Warm-up time to 60% light (nom.)	0.5 s
Light Technical		Power factor (nom.)	0.9
Colour Code	840 [ CCT of 4,000 K]	Voltage (Nom)	220-240 V
Technical Beam Angle (Nom)	200 °	Temperature	
Lamp Luminous Flux 25°C EL (Nom)	3900 lm	T-ambient (max.)	45 °C
Colour Designation	Cool White (CW)	T-ambient (min.)	-20 °C
Colour Temperature, horizontal (Nom)	4000 K	T storage (max.)	65 °C
Lamp Luminous Efficacy EM (Nom)	150.00 lm/W	T storage (min.)	-40 °C
Colour consistency	<6	T-Case maximum (nom.)	67.4 °C
Colour Rendering Index,horiz (Nom)	80	Controls and Dimming	
LLMF at end of nominal lifetime (nom.)	70 %	Dimmable	No

# MASTER LEDtube Mains T5

## Mechanical and Housing

Bulb material	Glass
Product length	1500 mm

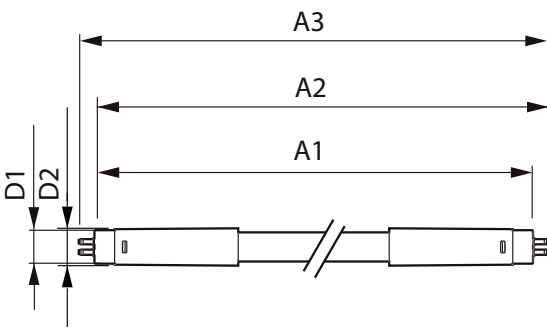
## Approval and Application

Energy efficiency label (EEL)	A++
Energy-saving product	Yes
Approval marks	CE marking RoHS compliance KEMA Keur certificate
Energy consumption kWh/1,000 hours	26 kWh

## Product Data

Full product code	871869681931900
Order product name	MASTER LEDtube 1500mm HO 26W 840 T5
EAN/UPC – product	8718696819319
Order code	929001908902
Numerator – quantity per pack	1
SAP numerator – packs per outer box	10
Material no. (12 NC)	929001908902
SAP net weight (piece)	0.285 kg

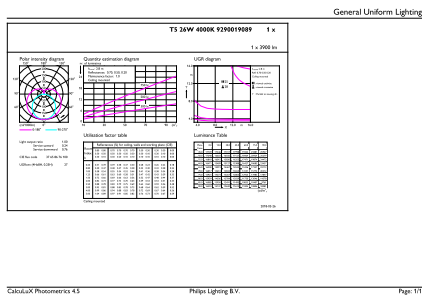
## Dimensional drawing



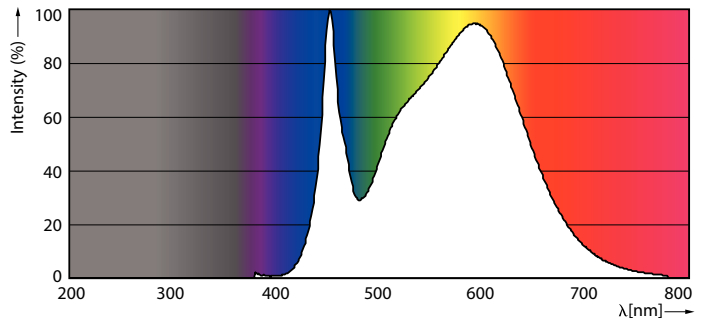
TLED 1500mm 26W-54W 3900lm 200D 4000K G5

Product	D1	D2	A1	A2	A3
MASTER LEDtube 1500mm HO 26W 840 T5	15 mm	16.9 mm	1449 mm	1456.1 mm	1463.2 mm

## Photometric data



26W G5 840 4000K



26W G5

# MASTER LEDtube Mains T5

## Photometric data



26W G5 830 3000K

## Lifetime



26W G5



26W G5



26W G5



26W G5

# MASTER LEDtube Mains T5

## Lifetime



26W G5

