



MASTER LEDtube Mains T5

MASTER LEDtube 1200mm HO 26W 840 T5

The new Philips Master LEDtube Mains T5 brings simplicity to your lighting project. You don't need to pay attention to the driver technology anymore. Thanks to a unique design, Philips MASTER LEDtube Mains T5 installs in luminaires operating on mains power connection. So simple to operate! Perfectly safe, reliable & easy to install, the Philips MASTER LEDtube Mains T5 is the ideal alternative to standard fluorescent tubes to maximise value over lifetime with high energy savings and lower maintenance costs.

Product data

General Information	
Cap base	G5 [G5]
EU RoHS compliant	Yes
Nominal lifetime (nom.)	50000 h
Switching cycle	200,000X
Light Technical	
Colour Code	840 [CCT of 4,000 K]
Technical Beam Angle (Nom)	200 °
Lamp Luminous Flux 25°C EL (Nom)	3900 lm
Colour Designation	Cool White (CW)
Colour Temperature, horizontal (Nom)	4000 K
Lamp Luminous Efficacy EM (Nom)	150.00 lm/W
Colour consistency	<6
Colour Rendering Index,horiz (Nom)	80
LLMF at end of nominal lifetime (nom.)	70 %

Operating and Electrical	
Input frequency	50 to 60 Hz
Power (Rated) (Nom)	26 W
Starting time (nom.)	0.5 s
Warm-up time to 60% light (nom.)	0.5 s
Power factor (nom.)	0.9
Voltage (Nom)	220-240 V
Temperature	
T-ambient (max.)	45 °C
T-ambient (min.)	-20 °C
T storage (max.)	65 °C
T storage (min.)	-40 °C
T-Case maximum (nom.)	72.1 °C
Controls and Dimming	
Dimmable	No

MASTER LEDtube Mains T5

Mechanical and Housing

Bulb material	Glass
Product length	1200 mm

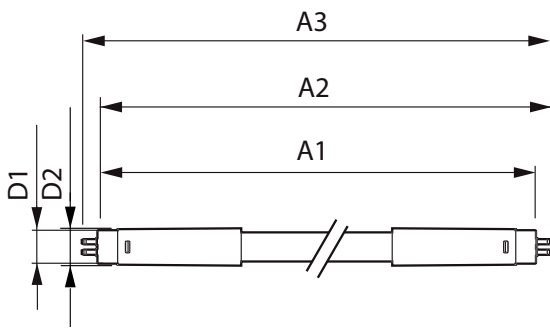
Approval and Application

Energy efficiency label (EEL)	A++
Energy-saving product	Yes
Approval marks	CE marking RoHS compliance KEMA Keur certificate
Energy consumption kWh/1,000 hours	26 kWh

Product Data

Full product code	871869681923400
Order product name	MASTER LEDtube 1200mm HO 26W 840 T5
EAN/UPC – product	8718696819234
Order code	929001908602
SAP numerator – quantity per pack	1
SAP numerator – packs per outer box	10
SAP material	929001908602
Net Weight (Piece)	0.215 kg

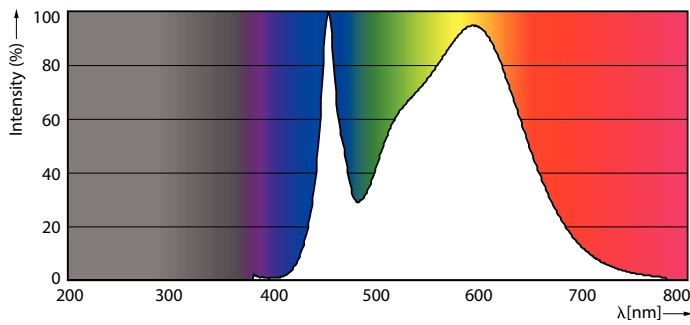
Dimensional drawing



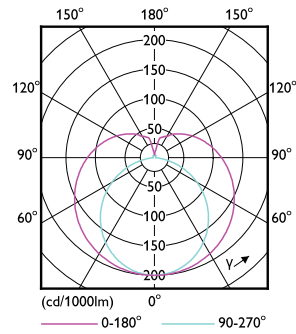
TLED 1200mm 26W-54W 3900lm 200D 4000K G5

Product	D1	D2	A1	A2	A3
MASTER LEDtube 1200mm HO 26W 840 T5	15 mm	16.9 mm	1149 mm	1156.1 mm	1163.2 mm

Photometric data



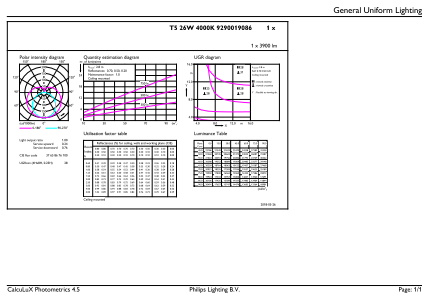
26W G5



26W G5 830 3000K

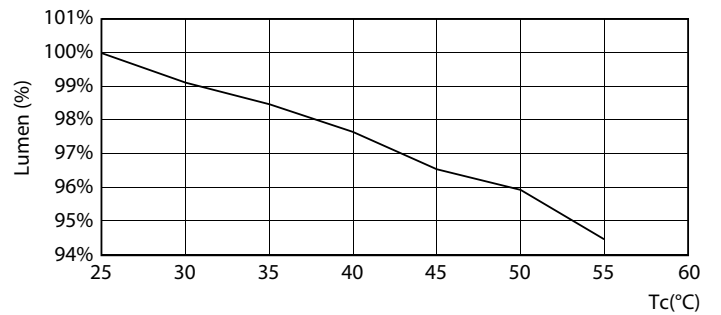
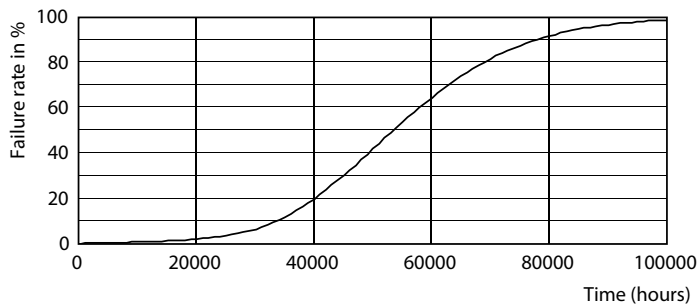
MASTER LEDtube Mains T5

Photometric data

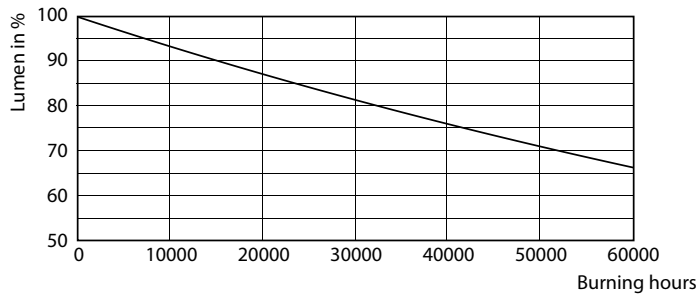


26W G5 840 4000K

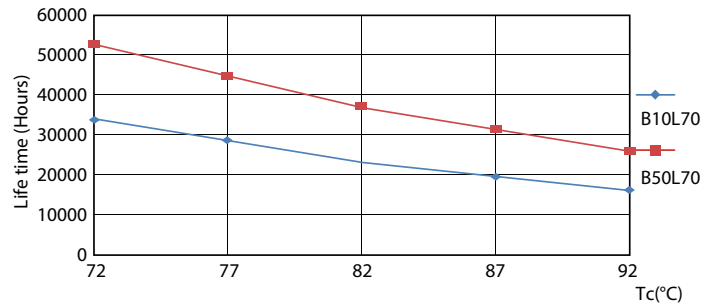
Lifetime



26W G5



26W G5

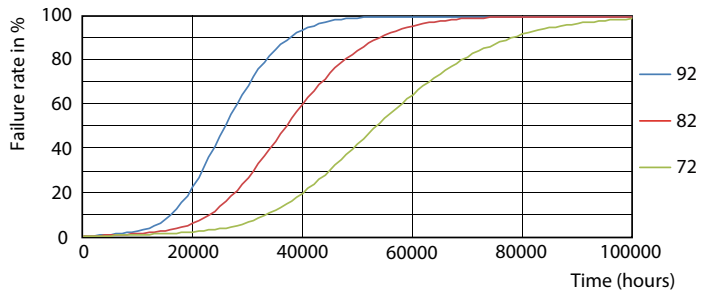


26W G5

26W G5

MASTER LEDtube Mains T5

Lifetime



26W G5

