

# MASTER LEDtube InstantFit HF T8

## MASTER LEDtube HF 600mm HO 8W865 T8

The Philips MASTER LEDtube integrates a LED light source into a traditional fluorescent form factor. Its unique design creates a perfectly uniform visual appearance which cannot be distinguished from traditional fluorescent. This product is the ideal solution for up lighting in general lighting applications.

### Warnings and Safety

- NOTES: The overall energy efficiency and light distribution of any installation that uses these lamps are determined by the design of the installation.

### Product data

General Information	
Cap base	G13 ROT (Rotating) [ Medium Bi-Pin Fluorescent]
EU RoHS compliant	Yes
Nominal lifetime (nom.)	60000 h
Switching cycle	50,000X
Light Technical	
Colour Code	865 [ CCT of 6,500 K]
Technical Beam Angle (Nom)	160 °
Lamp Luminous Flux 25°C EL (Nom)	1050 lm
Colour Designation	Cool Daylight
Colour Temperature, horizontal (Nom)	6500 K
Lamp Luminous Efficacy EM (Nom)	131.00 lm/W
Colour consistency	<6
Colour Rendering Index, horiz (Nom)	83

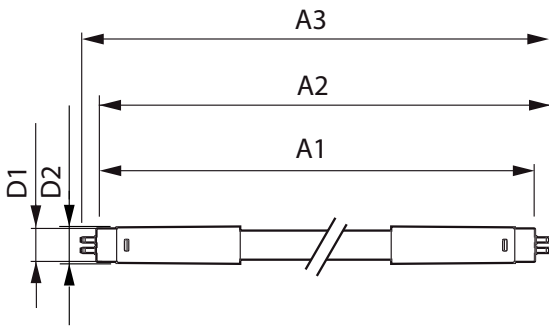
LLMF at end of nominal lifetime (nom.) 70 %	
Operating and Electrical	
Input frequency	20000-80000 Hz
Power (Rated) (Nom)	8 W
Lamp current (max.)	500 mA
Lamp current (min.)	150 mA
Starting time (nom.)	0.5 s
Warm-up time to 60% light (nom.)	0.5 s
Power factor (nom.)	0.9
Voltage (Nom)	20-50 V
Temperature	
T-ambient (max.)	45 °C
T-ambient (min.)	-20 °C
T storage (max.)	65 °C
T storage (min.)	-40 °C

# MASTER LEDtube InstantFit HF T8

T-Case maximum (nom.)	60 °C
<b>Controls and Dimming</b>	
Dimmable	No
<b>Mechanical and Housing</b>	
Bulb material	Plastic
Product length	600 mm
<b>Approval and Application</b>	
Energy efficiency label (EEL)	A+
Energy-saving product	Yes
Approval marks	RoHS compliance CE marking KEMA Keur certificate

Energy consumption kWh/1,000 hours	10 kWh
<b>Product Data</b>	
Full product code	871869674367600
Order product name	MASTER LEDtube HF 600mm HO 8W865 T8
EAN/UPC – product	8718696743676
Order code	929001393302
Numerator – quantity per pack	1
SAP numerator – packs per outer box	10
Material no. (12 NC)	929001393302
SAP net weight (piece)	0.160 kg

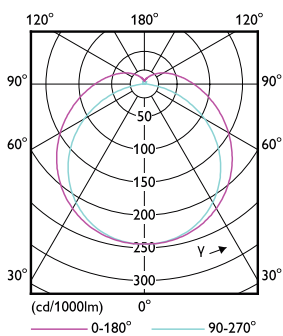
## Dimensional drawing



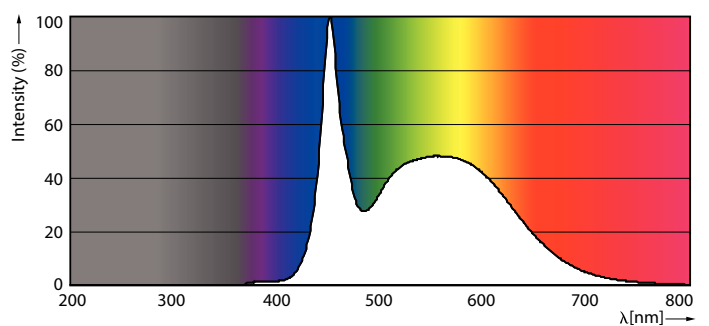
MAS LEDtube HF 600mm 10.5W865 T8

Product	D1	D2	A1	A2	A3
MASTER LEDtube HF 600mm HO 8W865 T8	25.6 mm	28 mm	588.6 mm	595.7 mm	602.8 mm

## Photometric data



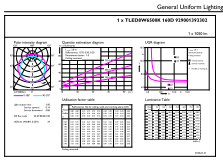
8W G13 830 3000K



8W G13

# MASTER LEDtube InstantFit HF T8

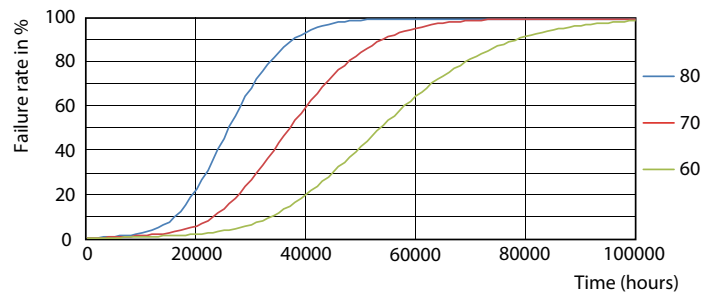
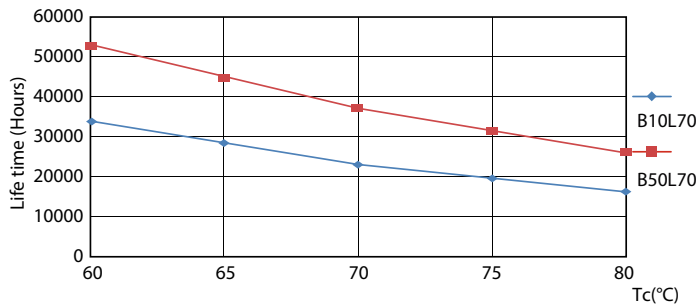
## Photometric data



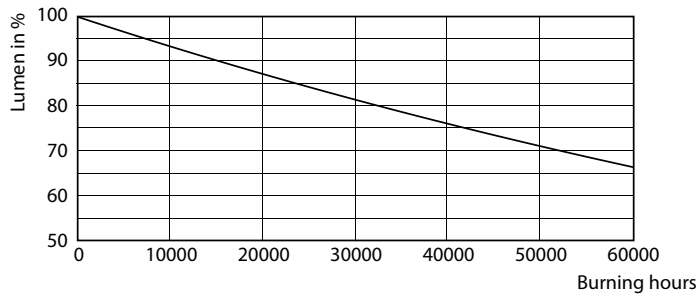
© 2020 Philips Lighting B.V. Page 11 of 11

### 8W G13 865 6500K

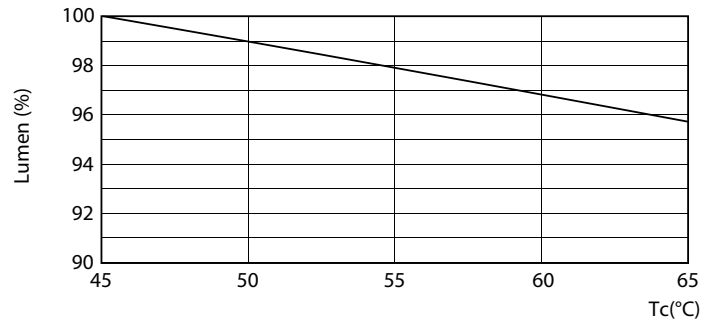
## Lifetime



### 8W G13



### 8W G13

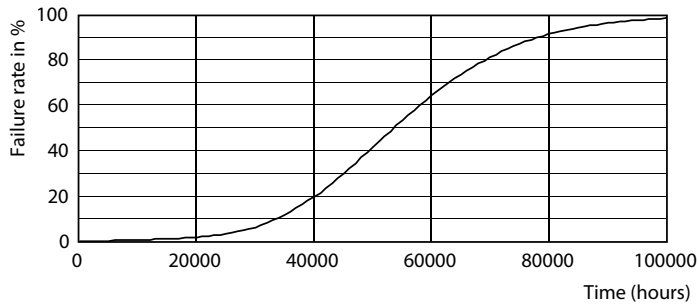


### 8W G13

### 8W G13

# MASTER LEDtube InstantFit HF T8

## Lifetime



8W G13

