



MASTER LEDtube InstantFit HF T8

MASTER LEDtube HF 600mm HO 8W840 T8

The Philips MASTER LEDtube integrates a LED light source into a traditional fluorescent form factor. Its unique design creates a perfectly uniform visual appearance which cannot be distinguished from traditional fluorescent. This product is the ideal solution for up lighting in general lighting applications.

Warnings and Safety

- NOTES: The overall energy efficiency and light distribution of any installation that uses these lamps are determined by the design of the installation.

Product data

General Information	
Cap base	G13 ROT (Rotating) [Medium Bi-Pin Fluorescent]
EU RoHS compliant	Yes
Nominal lifetime (nom.)	60000 h
Switching cycle	50,000X

Light Technical	
Colour Code	840 [CCT of 4,000 K]
Technical Beam Angle (Nom)	160 °
Lamp Luminous Flux 25°C EL (Nom)	1050 lm
Colour Designation	Cool White (CW)
Colour Temperature, horizontal (Nom)	4000 K
Lamp Luminous Efficacy EM (Nom)	131.00 lm/W
Colour consistency	<6
Colour Rendering Index, horiz (Nom)	83

Operating and Electrical	
Input frequency	20000-80000 Hz
Power (Rated) (Nom)	8 W
Lamp current (max.)	500 mA
Lamp current (min.)	150 mA
Starting time (nom.)	0.5 s
Warm-up time to 60% light (nom.)	0.5 s
Power factor (nom.)	0.9
Voltage (Nom)	20-50 V

Temperature	
T-ambient (max.)	45 °C
T-ambient (min.)	-20 °C
T storage (max.)	65 °C
T storage (min.)	-40 °C

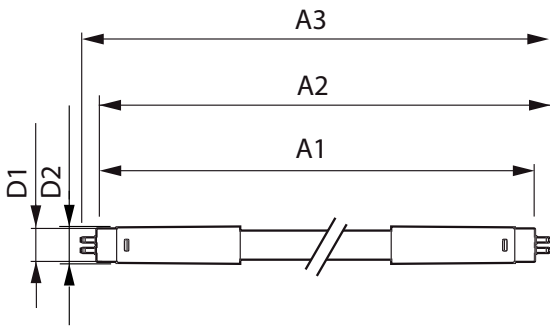
LLMF at end of nominal lifetime (nom.)	70 %
--	------

MASTER LEDtube InstantFit HF T8

T-Case maximum (nom.)	60 °C
Controls and Dimming	
Dimmable	No
Mechanical and Housing	
Bulb material	Plastic
Product length	600 mm
Approval and Application	
Energy efficiency label (EEL)	A+
Energy-saving product	Yes
Approval marks	RoHS compliance CE marking KEMA Keur certificate

Energy consumption kWh/1,000 hours	10 kWh
Product Data	
Full product code	871869674355300
Order product name	MASTER LEDtube HF 600mm HO 8W840 T8
EAN/UPC – product	8718696743553
Order code	929001393202
SAP numerator – quantity per pack	1
SAP numerator – packs per outer box	10
SAP material	929001393202
Net Weight (Piece)	0.160 kg

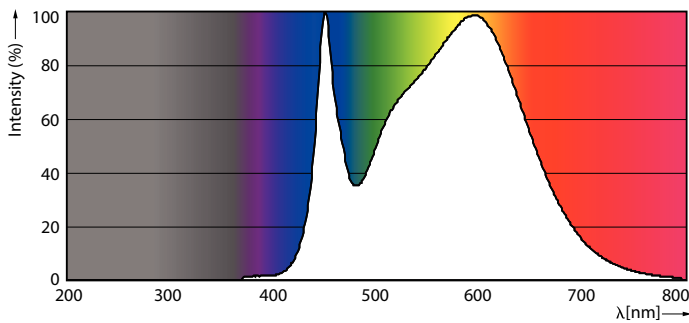
Dimensional drawing



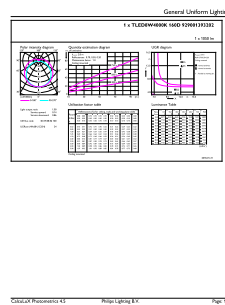
MAS LEDtube HF 600mm 10.5W840 T8

Product	D1	D2	A1	A2	A3
MASTER LEDtube HF 600mm HO 8W840 T8	25.6 mm	28 mm	588.6 mm	595.7 mm	602.8 mm

Photometric data



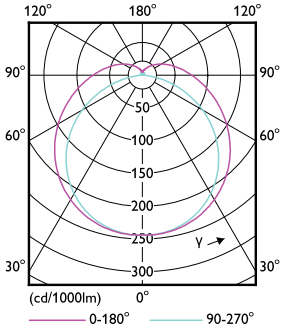
8W G13



8W G13 840 4000K

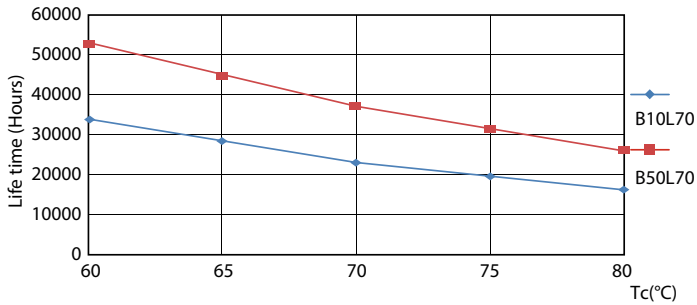
MASTER LEDtube InstantFit HF T8

Photometric data

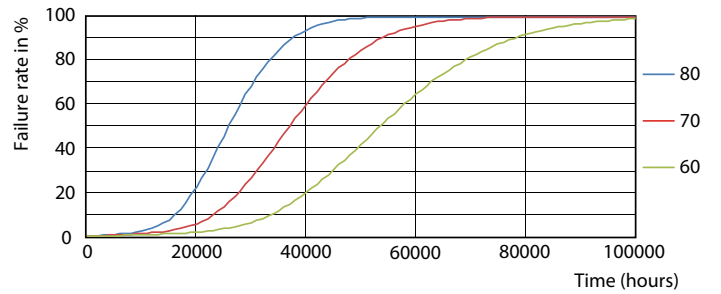


8W G13 830 3000K

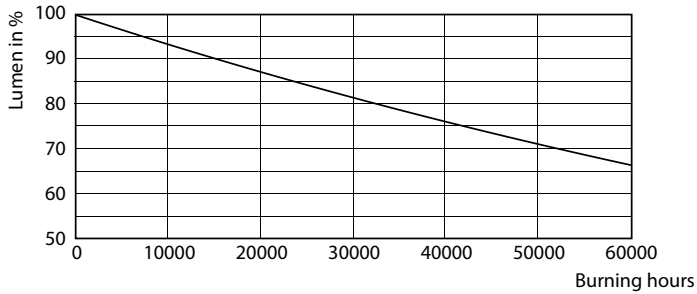
Lifetime



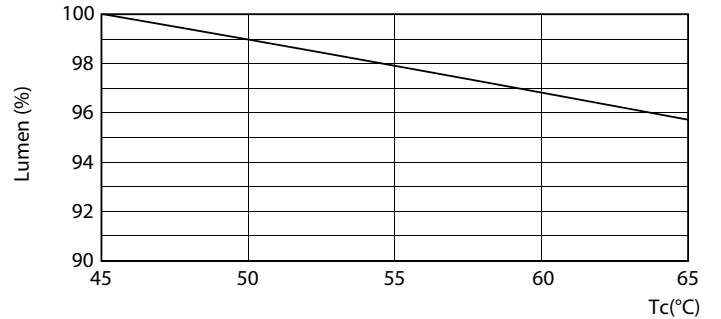
8W G13



8W G13



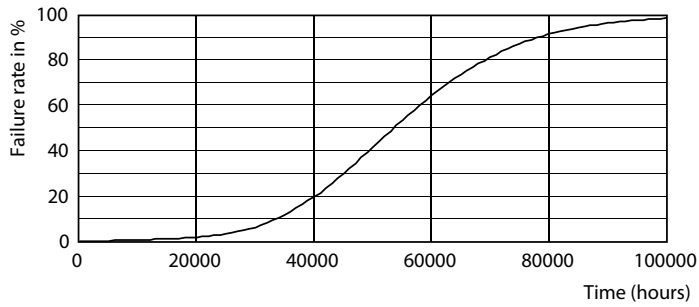
8W G13



8W G13

MASTER LEDtube InstantFit HF T8

Lifetime



8W G13

