



MASTER LEDtube InstantFit HF T5

Master LEDtube HF 1200mm HO 26W 840 T5

Philips MASTER LEDtube InstantFit T5 integrates a LED light source into a traditional fluorescent form factor. Its unique design creates a perfectly uniform visual appearance which cannot be distinguished from traditional fluorescents. The Philips MASTER LEDtube InstantFit T5 is the ideal solution for customers who have higher light output requirements and want to maximise value over the lifetime. The full energy savings & longer lifetime result in attractive payback times and TCO benefits.

Product data

General Information	
Cap base	G5 [G5]
EU RoHS compliant	Yes
Nominal lifetime (nom.)	50000 h
Switching cycle	50,000X

Light Technical	
Colour Code	840 [CCT of 4,000 K]
Technical Beam Angle (Nom)	160 °
Lamp Luminous Flux 25°C EL (Nom)	3900 lm
Colour Designation	Cool White (CW)
Colour Temperature, horizontal (Nom)	4000 K
Lamp Luminous Efficacy EM (Nom)	150.00 lm/W
Colour consistency	<6
Colour Rendering Index,horiz (Nom)	83
LLMF at end of nominal lifetime (nom.)	70 %

Operating and Electrical	
Input frequency	35000-80000 Hz

Power (Rated) (Nom)	26 W
Lamp current (max.)	700 mA
Lamp current (min.)	450 mA
Starting time (nom.)	0.5 s
Warm-up time to 60% light (nom.)	0.5 s
Power factor (nom.)	0.9
Voltage (Nom)	50-60 V

Temperature	
T-ambient (max.)	45 °C
T-ambient (min.)	-20 °C
T storage (max.)	65 °C
T storage (min.)	-40 °C
T-Case maximum (nom.)	45 °C

Controls and Dimming	
Dimmable	No

MASTER LEDtube InstantFit HF T5

Mechanical and Housing

Bulb material	Plastic
Product length	1200 mm

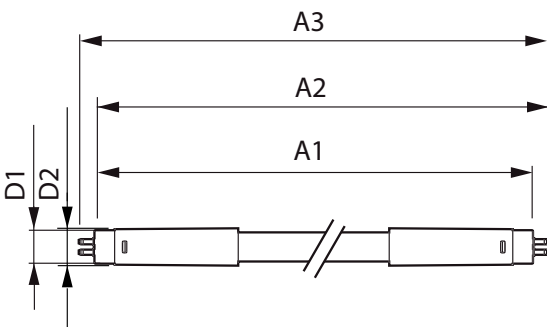
Approval and Application

Energy efficiency label (EEL)	A++
Energy-saving product	Yes
Approval marks	RoHS compliance CE marking KEMA Keur certificate
Energy consumption kWh/1,000 hours	31 kWh

Product Data

Full product code	871869670529200
Order product name	Master LEDtube HF 1200mm HO 26W 840 T5
EAN/UPC – product	8718696705292
Order code	929001338402
Numerator – quantity per pack	1
SAP numerator – packs per outer box	10
Material no. (12 NC)	929001338402
SAP net weight (piece)	0.155 kg

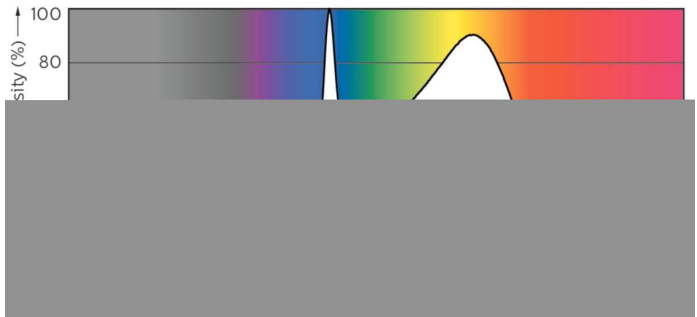
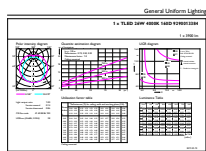
Dimensional drawing



TLED 1200mm 26-49W 3900lm 4000K G5 ND

Product	D1	D2	A1	A2	A3
Master LEDtube HF 1200mm HO 26W 840 T5	15.2 mm	21 mm	1147.8 mm	1154.9 mm	1162 mm

Photometric data

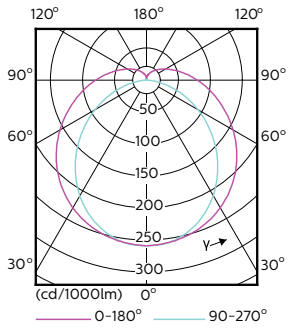


LEDtube 1200mm 26W G5 840 3900lm

LEDtube 1200mm 26W G5 840 3900lm

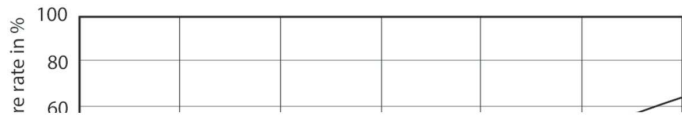
MASTER LEDtube InstantFit HF T5

Photometric data



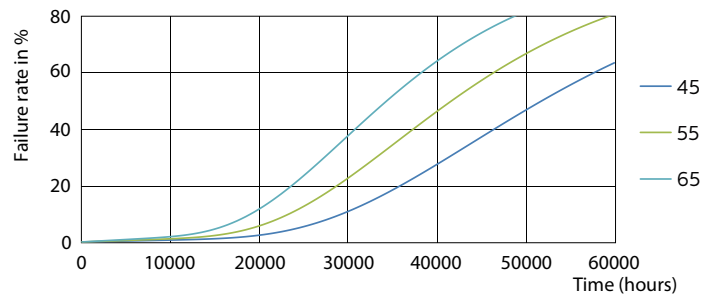
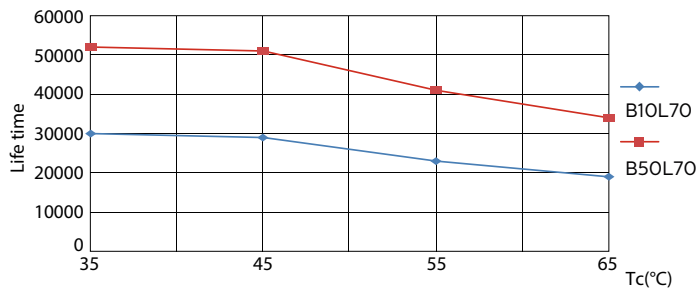
LEDtube 1200mm 26W G5

Lifetime



LEDtube 1200mm 26W G5 3900lm

LEDtube 1200mm 26W G5 3900lm

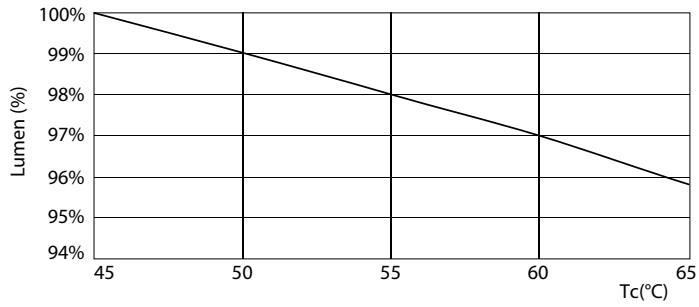


LEDtube 1200mm 26W G5 3900lm

LEDtube 1200mm 26W G5 3900lm

MASTER LEDtube InstantFit HF T5

Lifetime



LEDtube 1200mm 26W G5 3900lm

