



# UniStrip G4

## BCP384 24LED RGBNW 220V 40 L50 DMX

UniStrip G4 is a surface-mounted, exterior-rated LED luminaire that is designed for façade and outdoor architectural lighting applications.;One family that fits all your needs, wall washing, grazing and also linear flood lighting.;The robust mechanical and unique optical designs make it ideal for illuminating buildings facades, bridges, overpasses and any application that requires a linear lighting solution.;Available in white, monochromatic colours, RGB, RGBW and tunable white and DMX control option available with up to 8 pixels (8IDs) to give architects and designers the freedom to explore a wide range of concepts and design with no limitations.

### Warnings and Safety

- For outdoor use only

### Product data

General Information		Light Technical	
Lamp colour code	Red, green, blue and white	CE mark	CE mark
Light source replaceable	No	Optic type outdoor	Medium beam angle 40°
Number of gear units	1 unit	Number of products on MCB (16 A type B)	4
Driver/power unit/transformer	PSU [ Power supply unit]	LED engine type	LED
Driver included	Yes	Serviceability class	Class B, the luminaire is equipped with some serviceable parts (when applicable): driver, control units, surge-protection device, front cover and mechanical parts
Optical cover/lens type	CLFT [ Clear flat]		
Luminaire light beam spread	40° x 40°		
Control interface	Dynamic DMX		
Connection	Flying leads/wires and 2 push-in connectors 4-pole	Standard tilt angle post-top	-
Cable	Cable 0.3 m without plug 3-pole + 2 cables 0.3 m with connector 4-pole	Standard tilt angle side entry	-
Protection class IEC	Safety class I (I)		
Flammability mark	F [ For mounting on normally flammable surfaces]		
		Operating and Electrical	
		Input Voltage	220 to 240 V
		Input frequency	50 to 60 Hz

## UniStrip G4

Inrush current	60 A
Inrush time	0.85 ms
Power factor (min.)	0.9

### Controls and Dimming

Dimmable	Yes
----------	-----

### Mechanical and Housing

Housing material	Aluminum extruded
Optic material	Polymethyl methacrylate
Optical cover/lens material	Tempered glass
Fixation material	Aluminium
Mounting device	MBA [ Mounting bracket adjustable]
Optical cover/lens shape	Flat
Optical cover/lens finish	Clear
Overall length	500 mm
Overall width	80 mm
Overall height	105 mm
Colour	Dark Grey

### Approval and Application

Ingress protection code	IP66 [ Dust penetration-protected, jet-proof]
Mech. impact protection code	IK06 [ 1 J]

### Initial Performance (IEC Compliant)

Initial luminous flux (system flux)	1621 lm
Luminous flux tolerance	+/-10%
Initial LED luminaire efficacy	41 lm/W
Lamp colour temperature	- K
Colour Rendering Index	-
Initial input power	40 W
Power consumption tolerance	+/-10%

### Application Conditions

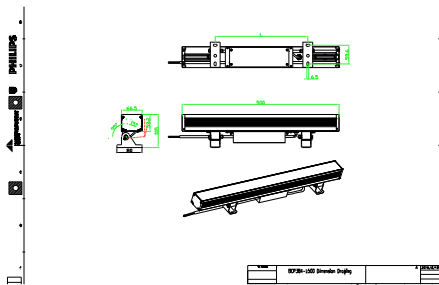
Ambient temperature range	-40 to +50 °C
Maximum dimming level	10%

### Product Data

Full product code	911401751312
Order product name	BCP384 24LED RGBNW 220V 40 L50 DMX
Order code	911401751312
SAP numerator – quantity per pack	1
Numerator – packs per outer box	4
Material no. (12 NC)	911401751312
SAP net weight (piece)	2.399 kg



## Dimensional drawing



BCP280/383/384/385 UNiStrip G3

