



UniFlood C

BVP323 24LED 40K 220V 15

UniFlood C is a circular-shaped, exterior-rated and cost-effective architectural LED floodlight that is designed for façade, landscape and outdoor flood lighting applications. The robust mechanical design and high-efficiency optical design make it ideal for illuminating multi-storey exterior facades, bridges, landmarks and monuments. Available in white, monochromatic colours, RGB, RGBW and tunable white. Six different spread lenses, ranging from narrow spot to wide flood, and a DMX512/RDM control option available to give architects and designers the freedom to explore a wide range of concepts and design with no limitations.

Warnings and Safety

- For outdoor use only

Product data

General Information		Number of products on MCB (16 A type B) 4	
Lamp colour code	Neutral white	LED engine type	LED
Light source replaceable	No	Serviceability class	Class B, the luminaire is equipped with some serviceable parts (when applicable): driver, control units, surge-protection device, front cover and mechanical parts
Number of gear units	1 unit	Operating and Electrical	
Driver/power unit/transformer	PSU [Power supply unit]	Input Voltage	220 to 240 V
Driver included	Yes	Input frequency	50 to 60 Hz
Optical cover/lens type	FG [Flat glass]	Inrush current	60 A
Luminaire light beam spread	15°	Inrush time	0.65 ms
Control interface	-	Power factor (min.)	0.9
Connection	Flying leads/wires		
Cable	Cable 0.5 m without plug 3-pole		
Protection class IEC	Safety class I (I)		
Flammability mark	F [For mounting on normally flammable surfaces]		
CE mark	CE mark		
Constant light output	No		

UniFlood C

Controls and Dimming

Dimmable	No
----------	----

Mechanical and Housing

Housing material	Aluminum die-cast
Optic material	Polymethyl methacrylate
Optical cover/lens material	Tempered glass
Fixation material	Steel
Mounting device	MBA [Mounting bracket adjustable]
Optical cover/lens shape	Flat
Optical cover/lens finish	Clear
Overall length	315 mm
Overall width	262 mm
Overall height	169 mm
Overall diameter	262 mm
Colour	Dark Grey

Approval and Application

Ingress protection code	IP66 [Dust penetration-protected, jet-proof]
Mech. impact protection code	IK08 [5 J vandal-protected]

Initial Performance (IEC Compliant)

Initial luminous flux (system flux)	3990 lm
-------------------------------------	---------

Luminous flux tolerance	+/-10%
Initial LED luminaire efficacy	80 lm/W
Lamp colour temperature	4000 K
Colour Rendering Index	80
Initial chromaticity	SDCM = 4
Initial input power	50 W
Power consumption tolerance	+/-10%

Application Conditions

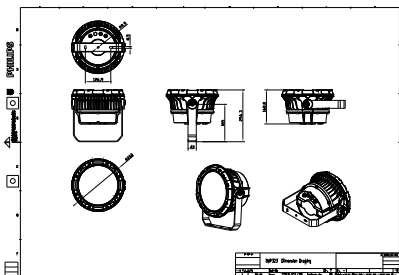
Ambient temperature range	-40 to +50 °C
---------------------------	---------------

Product Data

Full product code	911401740302
Order product name	BVP323 24LED 40K 220V 15
Order code	911401740302
SAP numerator – quantity per pack	1
Numerator – packs per outer box	2
Material no. (12 NC)	911401740302
SAP net weight (piece)	5.199 kg



Dimensional drawing



BVP321/322/323/324

