



# CorePro LEDtube EM/ Mains

## CorePro LEDtube 1500mm 20W 865 T8 AP I

The CorePro LEDtube is an affordable LED solution suitable for replacing T8 fluorescent lamps. The product provides a natural lighting effect for use in general lighting applications, as well as instant energy savings – an environmentally friendly solution.

### Warnings and Safety

• -

### Product data

General information	
Cap base	G13 [ Medium Bi-Pin Fluorescent]
EU RoHS compliant	Yes
Nominal lifetime (nom.)	30000 h
Switching cycle	200,000X

Light technical	
Colour Code	865 [ CCT of 6,500 K]
Technical Beam Angle (Nom)	240 °
Lamp Luminous Flux 25°C EL (Nom)	2200 lm
Colour Designation	Cool Daylight
Colour Temperature, horizontal (Nom)	6500 K
Lamp Luminous Efficacy EM (Nom)	110.00 lm/W
Colour consistency	<6
Colour Rendering Index,horiz (Nom)	80
LLMF at end of nominal lifetime (nom.)	70 %

Operating and electrical	
Input frequency	50 to 60 Hz
Power (Rated) (Nom)	20 W
Lamp current (max.)	108 mA
Lamp current (min.)	108 mA
Starting time (nom.)	0.5 s
Warm-up time to 60% light (nom.)	0.5 s
Power factor (nom.)	0.9
Voltage (Nom)	220-240 V

Temperature	
T-ambient (max.)	45 °C
T-ambient (min.)	-20 °C
T storage (max.)	65 °C
T storage (min.)	-40 °C
T-Case maximum (nom.)	50 °C

# CorePro LEDtube EM/Mains

## Controls and dimming

Dimmable	No
----------	----

## Mechanical and housing

Lamp Finish	Frosted
Bulb material	Glass
Product length	1500 mm
Bulb shape	Tube, double-ended

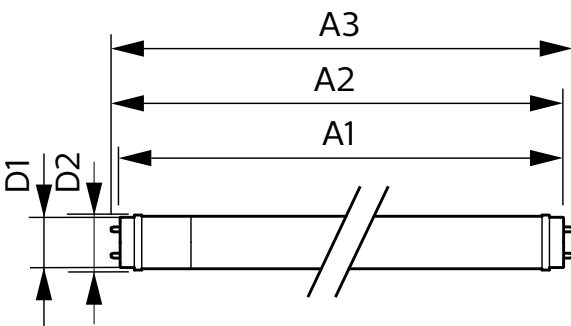
## Approval and application

Energy-saving product	Yes
Approval marks	RoHS compliance CE marking KEMA Keur certificate

## Product data

Full product code	871951444709700
Order product name	CorePro LEDtube 1500mm 20W 865 T8 AP I
EAN/UPC – product	8719514447097
Order code	929003520608
SAP numerator – quantity per pack	1
Numerator – packs per outer box	20
SAP material	929003520608
Copy Net Weight (Piece)	0.260 kg

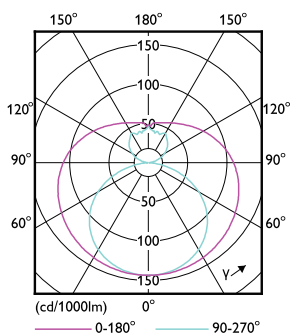
## Dimensional drawing



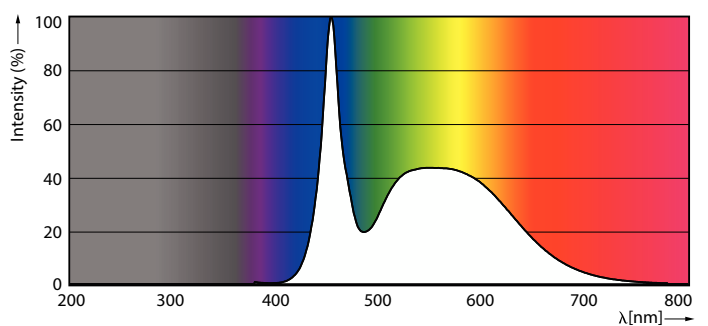
CorePro LEDtube 1500mm 20W 865 T8 AP I

Product	D1	D2	A1	A2	A3
CorePro LEDtube 1500mm 20W 865 T8 AP I	25.7 mm	28 mm	1500 mm	1507.1 mm	1514.2 mm

## Photometric data



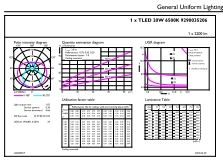
Light Distribution Diagram



Spectral Power Distribution Colour

# CorePro LEDtube EM/Mains

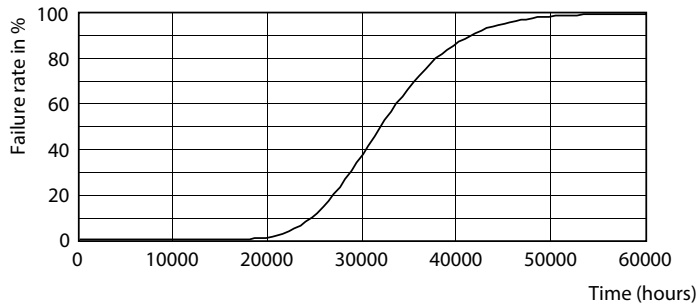
## Photometric data



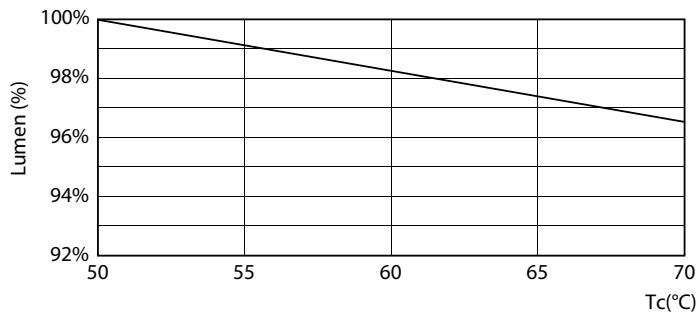
General uniform lighting

General uniform lighting

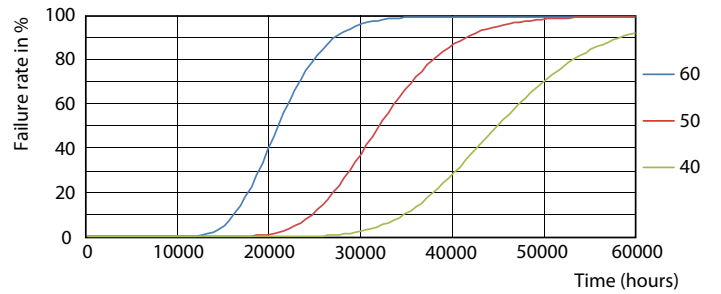
## Lifetime



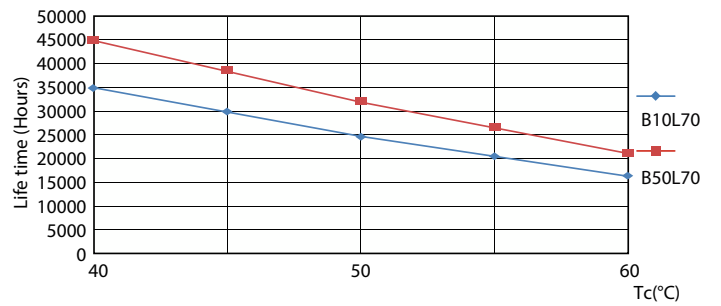
Life Expectancy Diagram



Lumen Maintenance Diagram



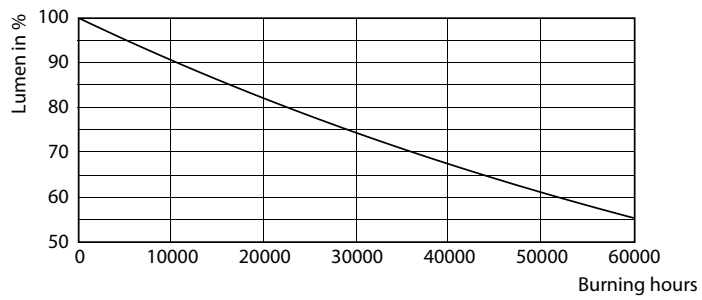
FailureRate



LifetimeVsTc

# CorePro LEDtube EM/Mains

## Lifetime



Lumen Maintenance Diagram

