



# CorePro LEDtube EM/ Mains

## CorePro LEDtube 1200mm 16W 865 T8 AP I

The CorePro LEDtube is an affordable LED solution suitable for replacing T8 fluorescent lamps. The product provides a natural lighting effect for use in general lighting applications, as well as instant energy savings – an environmentally friendly solution.

### Warnings and Safety

• -

### Product data

| General Information     |                                  |
|-------------------------|----------------------------------|
| Cap base                | G13 [ Medium Bi-Pin Fluorescent] |
| EU RoHS compliant       | Yes                              |
| Nominal lifetime (nom.) | 30000 h                          |
| Switching cycle         | 200,000X                         |

| Light Technical                        |                       |
|--|-----------------------|
| Colour Code                            | 865 [ CCT of 6,500 K] |
| Technical Beam Angle (Nom)             | 240 °                 |
| Lamp Luminous Flux 25°C EL (Nom)       | 1800 lm               |
| Colour Designation                     | Cool Daylight         |
| Colour Temperature, horizontal (Nom)   | 6500 K                |
| Lamp Luminous Efficacy EM (Nom)        | 112.00 lm/W           |
| Colour consistency                     | <6                    |
| Colour Rendering Index,horiz (Nom)     | 80                    |
| LLMF at end of nominal lifetime (nom.) | 70 %                  |

| Operating and Electrical         |             |
|----------------------------------|-------------|
| Input frequency                  | 50 to 60 Hz |
| Power (Rated) (Nom)              | 16 W        |
| Lamp current (max.)              | 88 mA       |
| Lamp current (min.)              | 88 mA       |
| Starting time (nom.)             | 0.5 s       |
| Warm-up time to 60% light (nom.) | 0.5 s       |
| Power factor (nom.)              | 0.9         |
| Voltage (Nom)                    | 220-240 V   |

| Temperature           |        |
|-----------------------|--------|
| T-ambient (max.)      | 45 °C  |
| T-ambient (min.)      | -20 °C |
| T storage (max.)      | 65 °C  |
| T storage (min.)      | -40 °C |
| T-Case maximum (nom.) | 50 °C  |

# CorePro LEDtube EM/Mains

## Controls and Dimming

|          |    |
|----------|----|
| Dimmable | No |
|----------|----|

## Mechanical and Housing

|                |                    |
|----------------|--------------------|
| Lamp Finish    | Frosted            |
| Bulb material  | Glass              |
| Product length | 1200 mm            |
| Bulb shape     | Tube, double-ended |

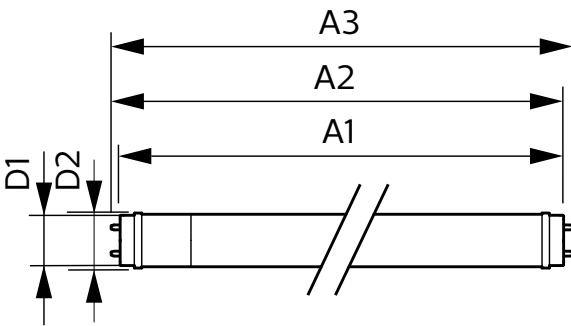
## Approval and Application

|                       |  |
|-----------------------|--|
| Energy-saving product | Yes  |
| Approval marks        | RoHS compliance CE marking KEMA Keur certificate |

## Product Data

|                                   |  |
|-----------------------------------|--|
| Full product code                 | 871951444705900                        |
| Order product name                | CorePro LEDtube 1200mm 16W 865 T8 AP I |
| EAN/UPC – product                 | 8719514447059                          |
| Order code                        | 929003520408                           |
| SAP numerator – quantity per pack | 1                                      |
| Numerator – packs per outer box   | 20                                     |
| SAP material                      | 929003520408                           |
| SAP net weight (piece)            | 0.200 kg                               |

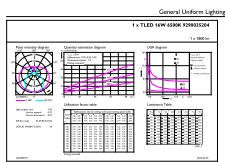
## Dimensional drawing



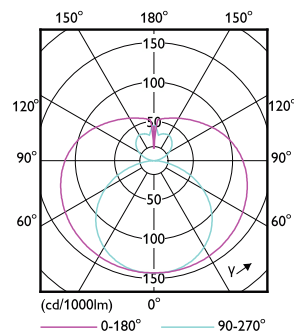
CorePro LEDtube 1200mm 16W 865 T8 AP I

| Product                                | D1      | D2    | A1      | A2      | A3      |
|--|---------|-------|---------|---------|---------|
| CorePro LEDtube 1200mm 16W 865 T8 AP I | 25.7 mm | 28 mm | 1198 mm | 1205 mm | 1212 mm |

## Photometric data



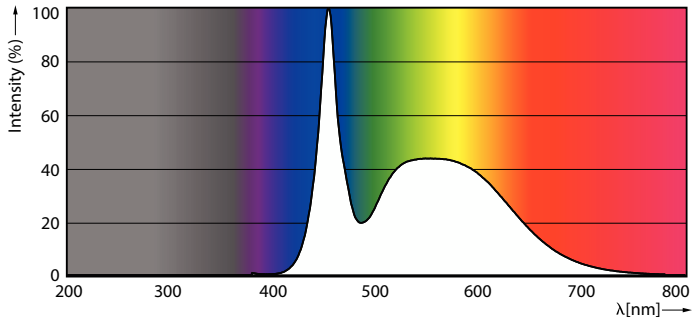
General uniform lighting



Light Distribution Diagram

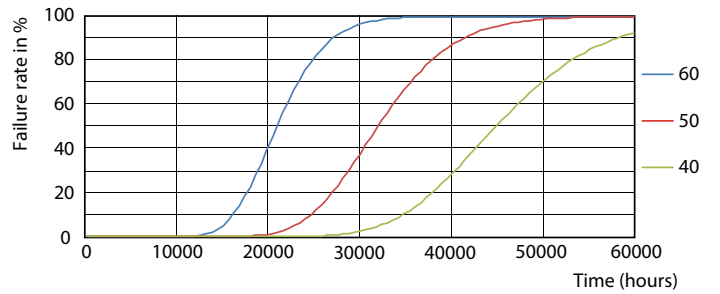
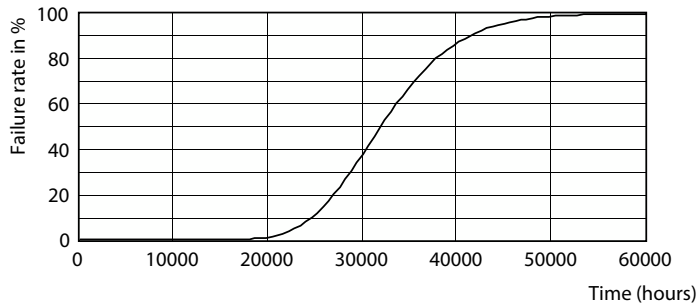
# CorePro LEDtube EM/Mains

## Photometric data

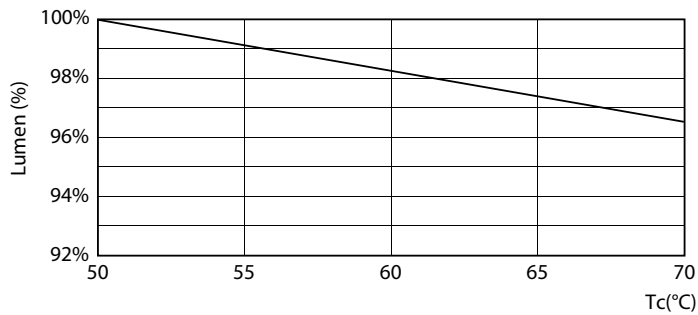


Spectral Power Distribution Colour

## Lifetime

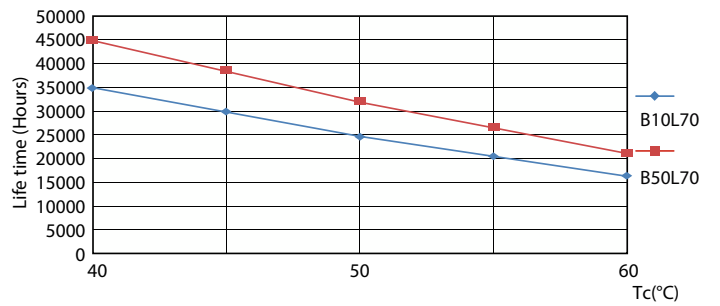


Life Expectancy Diagram



Lumen Maintenance Diagram

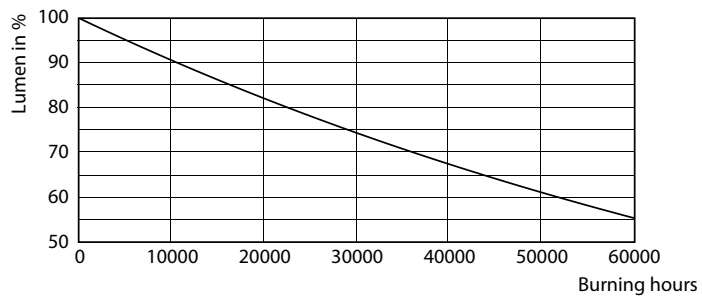
FailureRate



LEDtube\_30K\_4060\_LifetimeVsTc-LED

# CorePro LEDtube EM/Mains

## Lifetime



Lumen Maintenance Diagram

