

# MASTER Value LEDtube T8

## MASTER LEDtube VLE 1200mm HO 14W840 T8

A high-performance LED solution, the professional MASTER Value LED tube is ideal for replacing T8 fluorescent lamps using EM ballast or installing directly on the mains. This product provides a uniform lighting effect for use in all general lighting, as well as instant energy-efficiency, making for an environmentally friendly solution.

### Product data

General Information	
Cap base	G13 [ Medium Bi-Pin Fluorescent]
EU RoHS compliant	Yes
Nominal lifetime (nom.)	50000 h
Switching cycle	200,000X

Light Technical	
Colour Code	840 [ CCT of 4,000 K]
Technical Beam Angle (Nom)	240 °
Lamp Luminous Flux 25°C EL (Nom)	2100 lm
Colour Designation	Cool White (CW)
Colour Temperature, horizontal (Nom)	4000 K
Lamp Luminous Efficacy EM (Nom)	150.00 lm/W
Colour consistency	<6
Colour Rendering Index,horiz (Nom)	83
LLMF at end of nominal lifetime (nom.)	70 %

Operating and Electrical	
Input frequency	50 to 60 Hz
Power (Rated) (Nom)	14 W

Lamp current (nom.)	66 mA
Starting time (nom.)	0.5 s
Warm-up time to 60% light (nom.)	0.5 s
Power factor (nom.)	0.9
Voltage (Nom)	220-240 V

Temperature	
T-ambient (max.)	45 °C
T-ambient (min.)	-20 °C
T storage (max.)	65 °C
T storage (min.)	-40 °C
T-Case maximum (nom.)	55 °C

Controls and Dimming	
Dimmable	No

Mechanical and Housing	
Lamp Finish	Frosted
Bulb material	Glass
Product length	1200 mm

# MASTER Value LEDtube T8

Bulb shape	Tube, double-ended
------------	--------------------

## Approval and Application

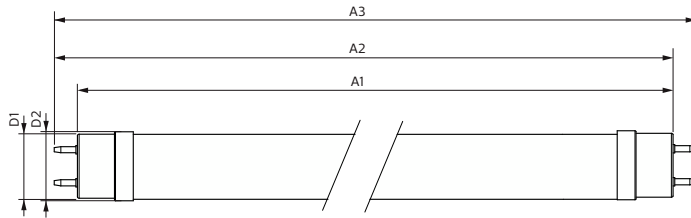
Energy-saving product	Yes
Approval marks	RoHS compliance KEMA Keur certificate

## Product Data

Full product code	871951435076200
Order product name	MASTER LEDtube VLE 1200mm HO 14W840 T8

EAN/UPC – product	8719514350762
Order code	929003070208
SAP numerator – quantity per pack	1
Numerator – packs per outer box	10
SAP material	929003070208
SAP net weight (piece)	0.215 kg

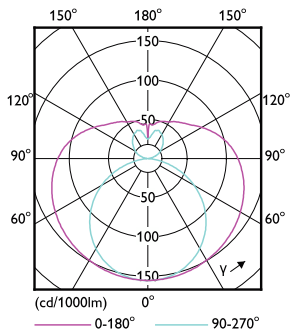
## Dimensional drawing



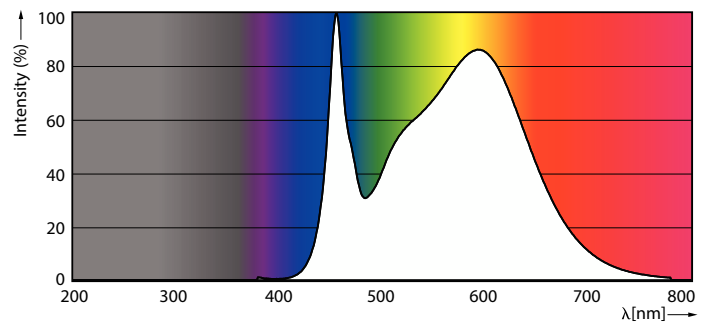
Product	D1	D2	A1	A2	A3
MASTER LEDtube VLE 1200mm HO 14W840 T8	25.8 mm	28 mm	1198.2 mm	1205.3 mm	1212.4 mm

## MASTER LEDtube VLE 1200mm HO 14W840 T8

## Photometric data



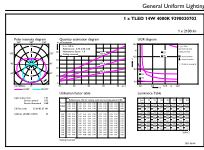
## LEDtube MAS GMGC 14W G13 2000lm-LDD



## LEDtube MAS GMGC 14W G13 2100lm 840-POC

# MASTER Value LEDtube T8

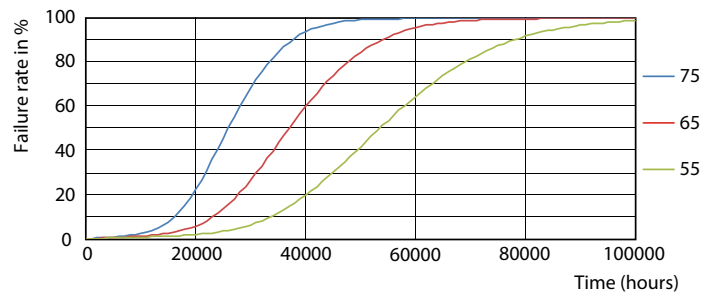
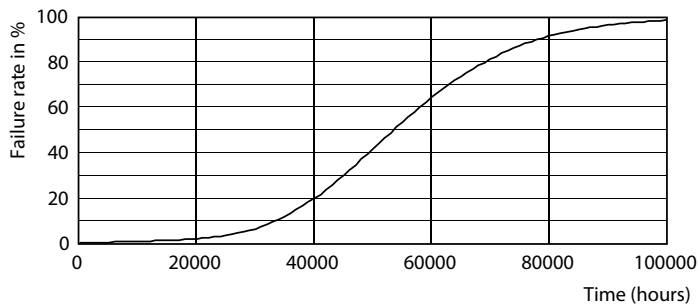
## Photometric data



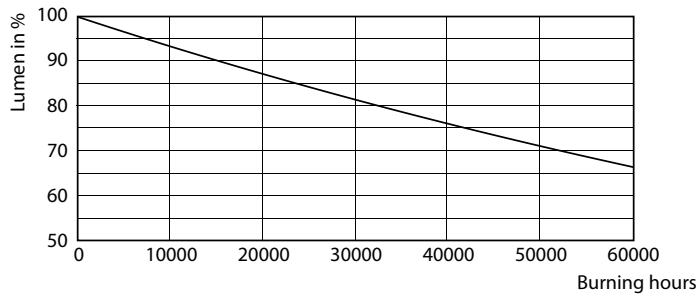
LEDtube MAS GMGC 14W G13 2100lm 840-GUL

LEDtube MAS GMGC 14W G13 2100lm 840-GUL

## Lifetime

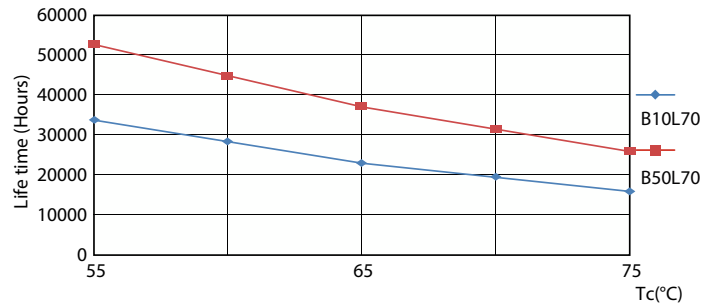


Life Expectancy Diagram



Lumen Maintenance Diagram

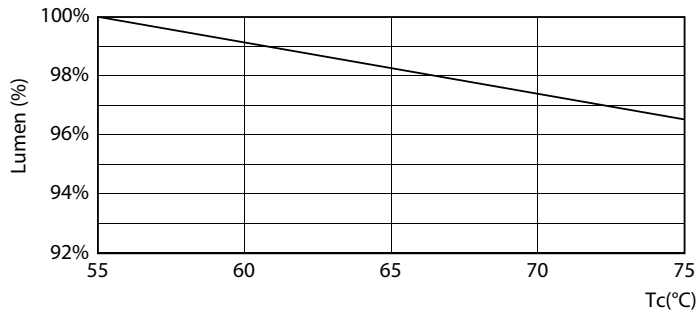
LEDtube 50K 5575 FailureRate-LED



LEDtube 50K 5575 LifetimeVsTc-LED

# MASTER Value LEDtube T8

## Lifetime



LEDtube MAS GMGC 8W 50K LumenVsTc-LMP

