

MASTER Value LEDtube T8

MASTER LEDtube VLE 600mm HO 8W 830 T8

A high-performance LED solution, the professional MASTER Value LED tube is ideal for replacing T8 fluorescent lamps using EM ballast or installing directly on the mains. This product provides a uniform lighting effect for use in all general lighting, as well as instant energy-efficiency, making for an environmentally friendly solution.

Product data

| General Information | |
|-------------------------|----------------------------------|
| Cap base | G13 [Medium Bi-Pin Fluorescent] |
| EU RoHS compliant | Yes |
| Nominal lifetime (nom.) | 50000 h |
| Switching cycle | 200,000X |

| Light Technical | |
|--|-----------------------|
| Colour Code | 830 [CCT of 3,000 K] |
| Technical Beam Angle (Nom) | 240 ° |
| Lamp Luminous Flux 25°C EL (Nom) | 1000 lm |
| Colour Designation | White (WH) |
| Colour Temperature, horizontal (Nom) | 3000 K |
| Lamp Luminous Efficacy EM (Nom) | 125.00 lm/W |
| Colour consistency | <6 |
| Colour Rendering Index,horiz (Nom) | 83 |
| LLMF at end of nominal lifetime (nom.) | 70 % |

| Operating and Electrical | |
|--------------------------|-------------|
| Input frequency | 50 to 60 Hz |
| Power (Rated) (Nom) | 8 W |

| | |
|----------------------------------|-----------|
| Lamp current (nom.) | 39 mA |
| Starting time (nom.) | 0.5 s |
| Warm-up time to 60% light (nom.) | 0.5 s |
| Power factor (nom.) | 0.9 |
| Voltage (Nom) | 220-240 V |

| Temperature | |
|-----------------------|--------|
| T-ambient (max.) | 45 °C |
| T-ambient (min.) | -20 °C |
| T storage (max.) | 65 °C |
| T storage (min.) | -40 °C |
| T-Case maximum (nom.) | 55 °C |

| Controls and Dimming | |
|----------------------|----|
| Dimmable | No |

| Mechanical and Housing | |
|------------------------|---------|
| Lamp Finish | Frosted |
| Bulb material | Glass |
| Product length | 600 mm |

MASTER Value LEDtube T8

| | |
|------------|--------------------|
| Bulb shape | Tube, double-ended |
|------------|--------------------|

Approval and Application

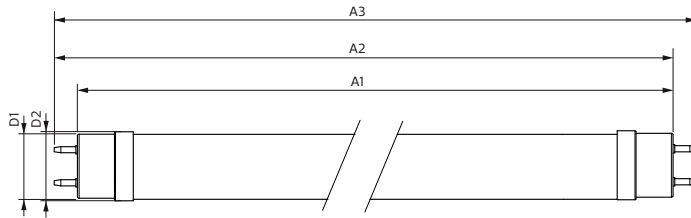
| | |
|-----------------------|---------------------------------------|
| Energy-saving product | Yes |
| Approval marks | RoHS compliance KEMA Keur certificate |

Product Data

| | |
|--------------------|---------------------------------------|
| Full product code | 871951435068700 |
| Order product name | MASTER LEDtube VLE 600mm HO 8W 830 T8 |

| | |
|-----------------------------------|---------------|
| EAN/UPC – product | 8719514350687 |
| Order code | 929003069808 |
| SAP numerator – quantity per pack | 1 |
| Numerator – packs per outer box | 10 |
| SAP material | 929003069808 |
| SAP net weight (piece) | 0.120 kg |

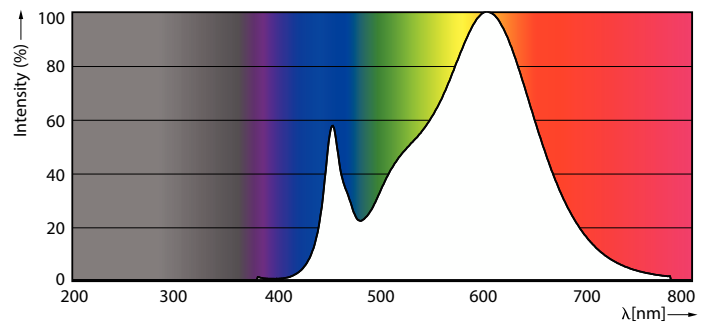
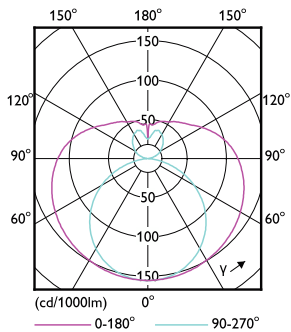
Dimensional drawing



| Product | D1 | D2 | A1 | A2 | A3 |
|--|---------|-------|----------|----------|----------|
| MASTER LEDtube VLE 600mm HO 8W 830 T8 | 25.8 mm | 28 mm | 588.5 mm | 595.5 mm | 602.5 mm |

MASTER LEDtube VLE 600mm HO 8W 830 T8

Photometric data

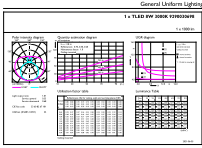


LEDtube MAS GMGC 14W G13 2000lm-LDD

LEDtube MAS GMGC 8W G13 1000lm 830-POC

MASTER Value LEDtube T8

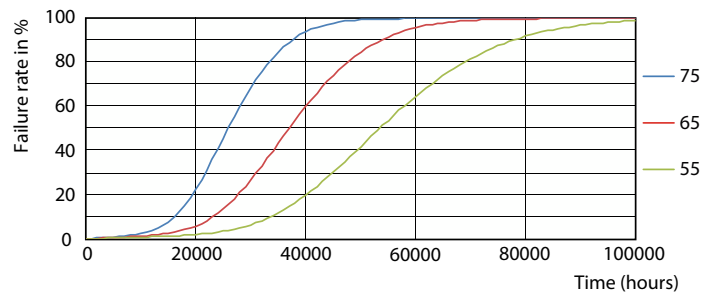
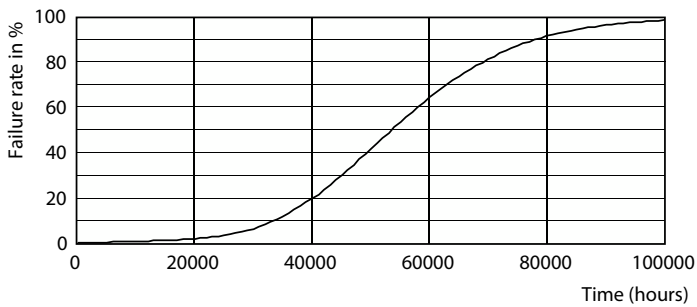
Photometric data



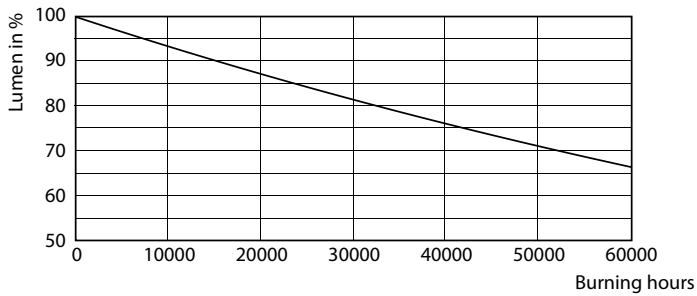
Technical Parameters 43 Page 10

LEDtube MAS GMGC 8W G13 1000lm 830-GUL

Lifetime

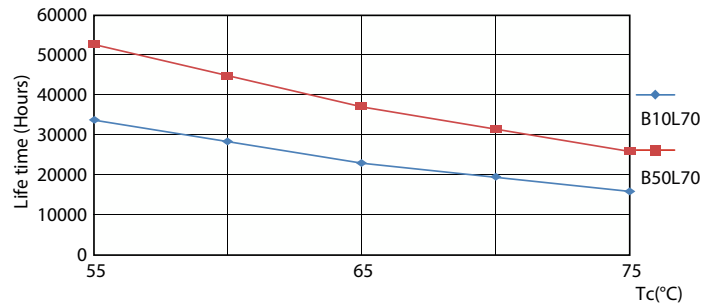


Life Expectancy Diagram



Lumen Maintenance Diagram

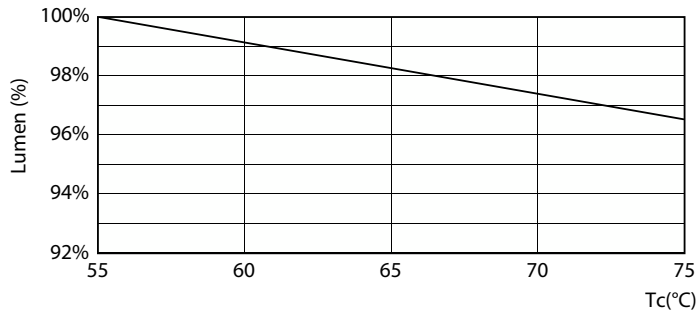
LEDtube 50K 5575 FailureRate-LED



LEDtube 50K 5575 LifetimeVsTc-LED

MASTER Value LEDtube T8

Lifetime



LEDtube MAS GMGC 8W 50K LumenVsTc-LMP

