



# Other LEDtube

## MAS Ledtube 600mm HO 8.3W 840 T5 DC

Philips LEDtube integrates a LED light source into a traditional fluorescent form factor. This product is the ideal solution for uplamping in general lighting applications: it meets basic lighting requirements, offers significant energy savings, and is environmentally friendly.

### Product data

| General Information                   |                    | Starting Time (Nom)           |  |
|---------------------------------------|--------------------|-------------------------------|--|
| Cap-Base                              | G5 [G5]            |                               | 0.5 s  |
| Nominal lifetime                      | 50,000 hour(s)     | Warm-up time to 60% light     | 0.5 s  |
| Switching Cycle                       | 200,000            | Voltage (Nom)                 | 52-59 V  |
| Lighting Technology                   | LED                | Temperature                   |  |
| EU RoHS compliant                     | Yes                | Ambient temperature range     | -20 °C to 45 °C                                  |
|                                       |                    | T-Case Maximum (Nom)          | 45 °C  |
| Light Technical                       |                    | Controls and Dimming          |  |
| Color Code                            | 840 [CCT of 4000K] | Dimmable                      | Yes  |
| Beam Angle (Nom)                      | 160 degree(s)      | Mechanical and Housing        |  |
| Luminous Flux                         | 1,250 lumen        | Bulb Finish                   | Frosted  |
| Color Designation                     | Cool White (CW)    | Bulb Material                 | Glass  |
| Correlated Color Temperature (Nom)    | 4000 K             | Product Length                | 600 mm   |
| Luminous Efficacy (rated) (Nom)       | 150.00 lm/W        | Bulb Shape                    | Tube, double-ended                               |
| Color Consistency                     | <6                 | Approval and Application      |  |
| Color rendering index (CRI)           | 82                 | Energy Saving Product         | Yes  |
| LLMF At End Of Nominal Lifetime (Nom) | 70 %               | Approval Marks                | RoHS compliance CE marking KEMA Keur certificate |
| Operating and Electrical              |                    | Energy Consumption kWh/1000 h | 9 kWh  |
| Line Frequency                        | - Hz               |                               |  |
| Input Frequency                       | - Hz               |                               |  |
| Power Consumption                     | 8.3 W              |                               |  |
| Lamp Current (Nom)                    | 150 mA             |                               |  |

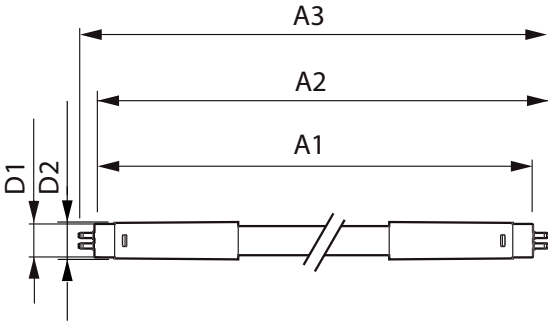
# Other LEDtube

## Product Data

|                                 |                                     |
|---------------------------------|-------------------------------------|
| Full product code               | 871869976519400                     |
| Order product name              | MAS Ledtube 600mm HO 8.3W 840 T5 DC |
| Order code                      | 929002387208                        |
| Numerator - Quantity Per Pack   | 1                                   |
| Numerator - Packs per outer box | 20                                  |

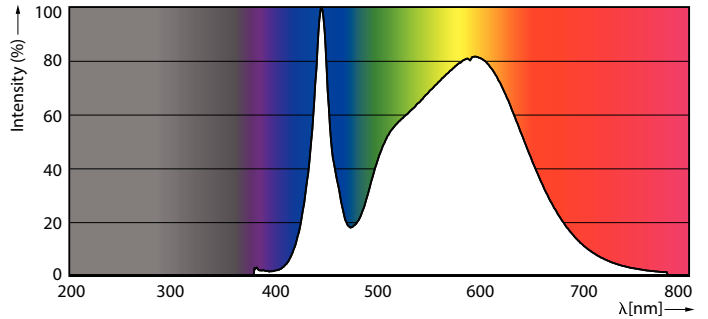
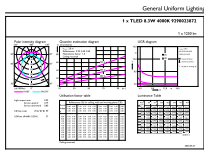
|                        |                                     |
|------------------------|-------------------------------------|
| Material Nr. (12NC)    | 929002387208                        |
| Full product name      | MAS Ledtube 600mm HO 8.3W 840 T5 DC |
| EAN/UPC - Case         | 8718699765200                       |
| EAN/UPC - Product/Case | 8718699765194                       |

## Dimensional drawing



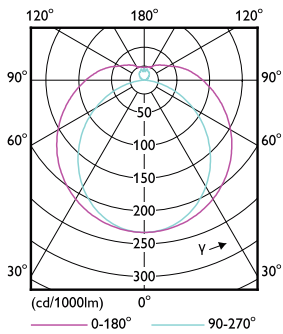
| Product                             | D1      | D2    | A1     | A2       | A3       |
|-------------------------------------|---------|-------|--------|----------|----------|
| MAS Ledtube 600mm HO 8.3W 840 T5 DC | 15.8 mm | 19 mm | 549 mm | 556.1 mm | 563.2 mm |

## Photometric data



General uniform lighting - MAS Ledtube 600mm HO 8.3W 840 T5 DC

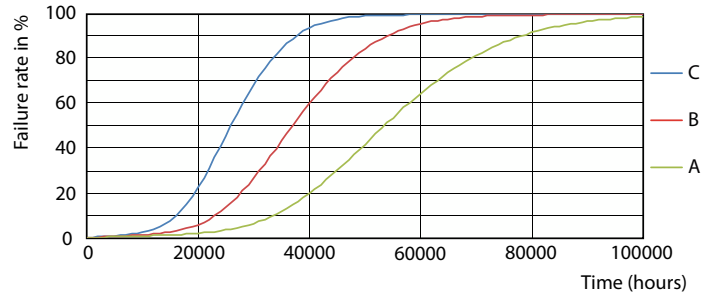
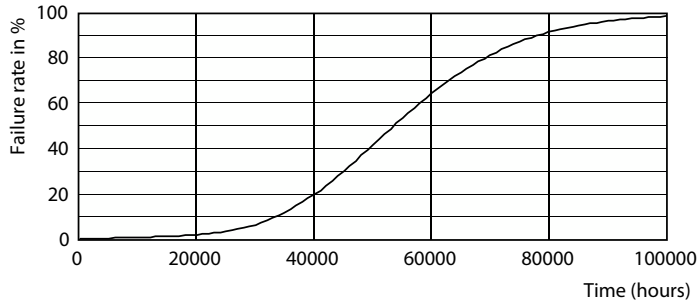
Spectral Power Distribution Colour - MAS Ledtube 600mm HO 8.3W 840 T5 DC



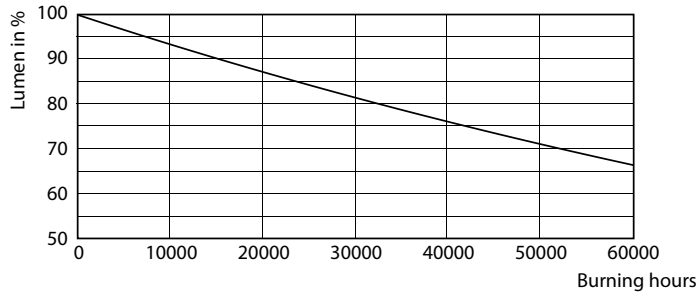
Light Distribution Diagram - MAS Ledtube 600mm HO 8.3W 840 T5 DC

# Other LEDtube

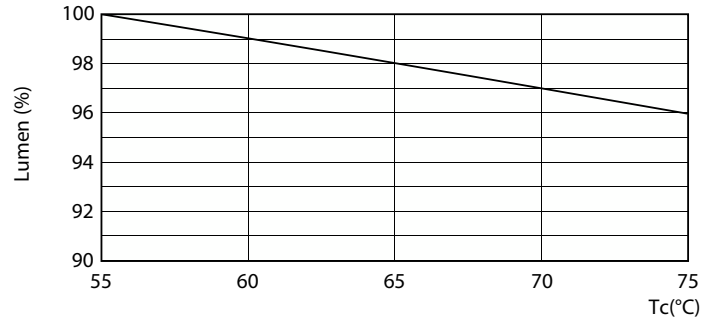
## Lifetime



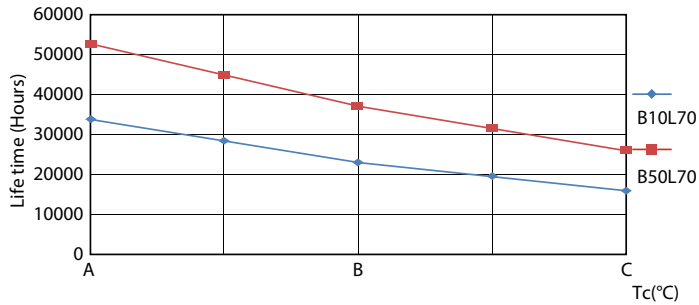
Life Expectancy Diagram - MAS Ledtube 600mm HO 8.3W 840 T5 DC



Life Expectancy Diagram



Lumen Maintenance Diagram - MAS Ledtube 600mm HO 8.3W 840 T5 DC



Lumen Maintenance Diagram - MAS Ledtube 600mm HO 8.3W 840 T5 DC

Life Expectancy Diagram

## Other LEDtube

