



MASTER LEDtube InstantFit HF T5

MAS LEDtube HF 1500mm HO 26W 830 T5 OE

The Philips MASTER LEDtube integrates a LED light source into a traditional fluorescent form factor. Its unique design creates a perfectly uniform visual appearance, which cannot be distinguished from traditional fluorescent. These T5 lighting tubes are the right choice for absolute performance and are designed to stand up to everyday conditions. Unparalleled savings thanks to low energy consumption and an exceptionally long lifetime make these T5 LED tubes the choice for every demanding application.

Product data

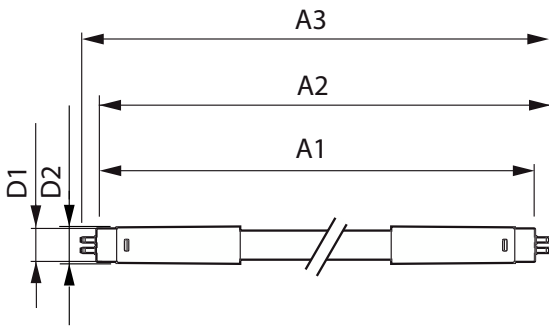
Operating and Electrical		Beam Angle (Nom)	
Line Frequency	20K to 140K Hz		200 degree(s)
Input Frequency	20K to 140K Hz	Luminous Flux	3,700 lumen
Power Consumption	26 W	Color Designation	White (WH)
Starting Time (Nom)	0.5 s	Correlated Color Temperature (Nom)	3000 K
Warm-up time to 60% light	0.5 s	Luminous Efficacy (rated) (Nom)	142.00 lm/W
Power Factor (Fraction)	0.9	Color Consistency	<6
Voltage (Nom)	60-120 V	Color rendering index (CRI)	80
		LLMF At End Of Nominal Lifetime (Nom)	70 %
General Information		Temperature	
Cap-Base	G5 [G5]	Ambient temperature range	-20 °C to 45 °C
Nominal lifetime	60,000 hour(s)	T-Case Maximum (Nom)	50 °C
Switching Cycle	50,000		
Lighting Technology	LED	Controls and Dimming	
Flux measurement reference	Sphere	Dimmable	Yes - Check ballast compatibility
Light Technical		Mechanical and Housing	
Color Code	830 [CCT of 3000K]	Bulb Finish	Frosted

MASTER LEDtube InstantFit HF T5

Bulb Material	Glass
Product Length	1,500 mm
Bulb Shape	Tube, double-ended
Approval and Application	
Energy Efficiency Class	E
Energy Saving Product	Yes
Approval Marks	RoHS compliance TUV CE marking KEMA Keur certificate
Energy Consumption kWh/1000 h	26 kWh
EPREL Registration Number	1,384,143
CE mark	Yes
EU RoHS compliant	Yes

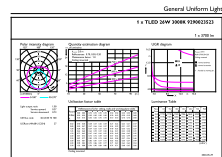
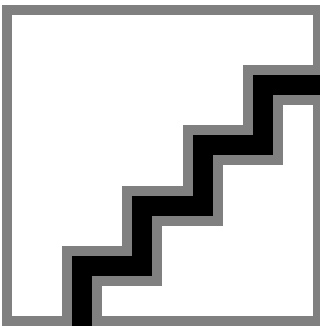
Product Data	
Full product code	871869974957600
Order product name	MAS LEDtube HF 1500mm HO 26W 830 T5 OE
Order code	929002352302
Numerator - Quantity Per Pack	1
Numerator - Packs per outer box	10
Material number (12NC)	929002352302
Full product name	MAS LEDtube HF 1500mm HO 26W 830 T5 OE
EAN/UPC - Case	8718699749583

Dimensional drawing



Product	D1	D2	A1	A2	A3
MAS LEDtube HF 1500mm HO 26W 830 T5 OE	15.5 mm	19 mm	1,449 mm	1,456 mm	1,463 mm

Photometric data

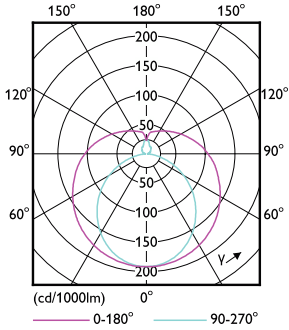


© 2023 Philips Lighting B.V. All rights reserved. Page 11

Spectral Power Distribution Colour - MAS LEDtube HF 1500mm HO 26W 830 T5 OE

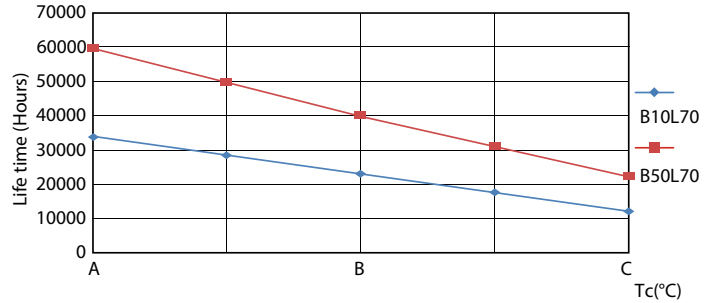
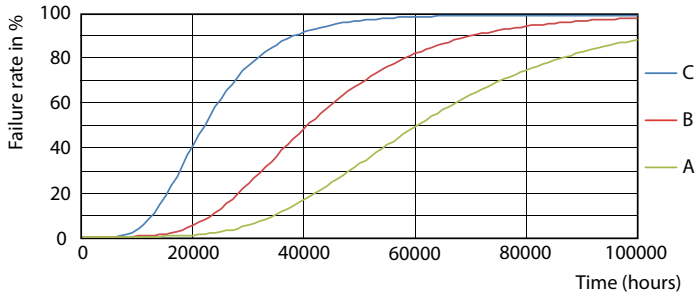
MASTER LEDtube InstantFit HF T5

Photometric data



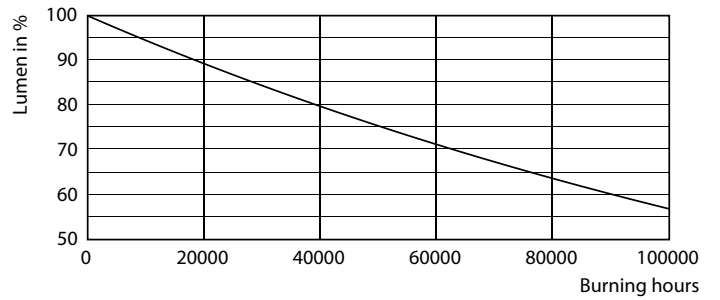
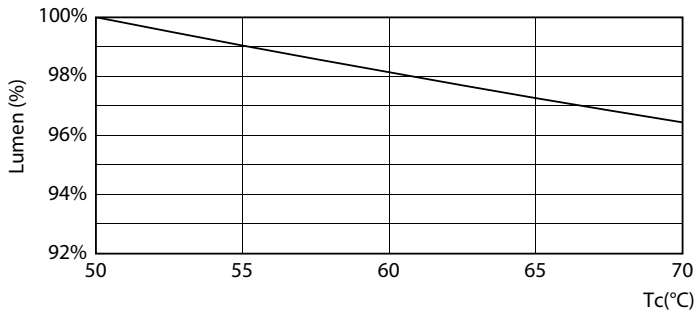
Light Distribution Diagram - MAS LEDtube HF 1500mm HO 26W 830 T5 OE

Lifetime



Life Expectancy Diagram - MAS LEDtube HF 1500mm HO 26W 830 T5 OE

Life Expectancy Diagram - MAS LEDtube HF 1500mm HO 26W 830 T5 OE

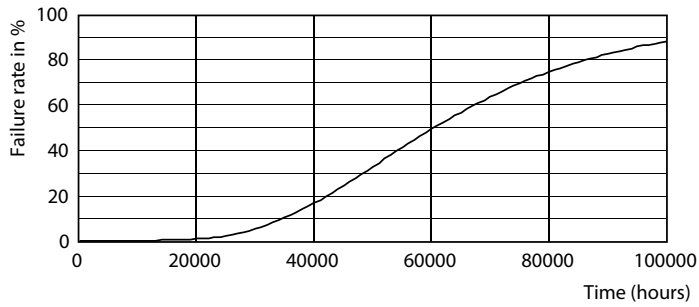


Lumen Maintenance Diagram - MAS LEDtube HF 1500mm HO 26W 830 T5 OE

Lumen Maintenance Diagram - MAS LEDtube HF 1500mm HO 26W 830 T5 OE

MASTER LEDtube InstantFit HF T5

Lifetime



Life Expectancy Diagram - MAS LEDtube HF 1500mm HO 26W 830 T5 OE

