

UniFlood M G2

BVP353 72LED 27K 220V L57 45

11950 lm - 150 W - 2700 K

The Philips UniFlood M gen2 is a cost-effective, exterior-rated architectural LED floodlight that's designed for façade, landscape and outdoor floodlighting applications. The robust, modular, rectangular design features highly-efficient optics, making it ideal for illuminating everything from multi-storey façades and bridges to landmarks and monuments. This LED floodlight is available in white, monochromatic colours, RGB, RGBW and tunable white. It comes with six different spread lenses ranging from narrow spot to wide flood and has DMX512/RDM control option. A truly modular floodlight that gives architects and designers the freedom to explore a wide range of concepts and designs with no limitations.

Warnings and Safety

- For outdoor use only.

Product data

General information		Input frequency	
Lamp colour code	827 warm white	Input frequency	50 to 60 Hz
Driver included	Yes	Inrush current	60 A
Optical cover/lens type	GC [Clear glass]	Power factor (min.)	0.95
Control interface	-	Controls and dimming	
Connection	Flying leads/wires	Dimmable	No
Cable	Cable without plug 3-pole	Mechanical and housing	
Protection class IEC	Safety class I (I)	Housing material	Aluminum extruded
Flammability mark	F [For mounting on normally flammable surfaces]	Optical cover/lens material	Acrylate
CE mark	CE mark	Overall length	569 mm
Operating and electrical		Overall width	140 mm
Input Voltage	220 to 240 V	Overall height	149 mm

UniFlood M G2

Effective projected area	0.078 m ²
Colour	Dark Grey
Dimensions (height x width x depth)	149 x 140 x 569 mm
Approval and application	
Ingress protection code	IP66 [Dust penetration-protected, jet-proof]
Mech. impact protection code	IK06 [1 J]
Initial performance (IEC compliant)	
Initial luminous flux (system flux)	11950 lm
Luminous flux tolerance	+/-10%
Initial LED luminaire efficacy	80 lm/W
Lamp colour temperature	2700 K
Colour Rendering Index	>80
Initial chromaticity	4 SDCM
Initial input power	150 W
Power consumption tolerance	+/-10%

Application conditions

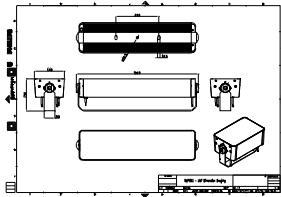
Ambient temperature range -40 to +50 °C

Product data

Full product code	871951492778099
Order product name	BVP353 72LED 27K 220V L57 45
EAN/UPC – product	8719514927780
Order code	911401748573
SAP numerator – quantity per pack	1
Numerator – packs per outer box	2
SAP material	911401748573
Net Weight (Piece)	6.800 kg



Dimensional drawing



BVP353 72LED 27K 220V L57 45

