



Master Value LEDtube T8

MASTER LEDtube VLE 1200mm HO 14W 830 T8

A high-performance LED solution, the professional Master Value LED tube is ideal for replacing T8 fluorescent lamps using EM ballast or installing directly on the mains. This product provides a uniform lighting effect for use in all general lighting, as well as instant energy-efficiency, making for an environmentally friendly solution.

Product data

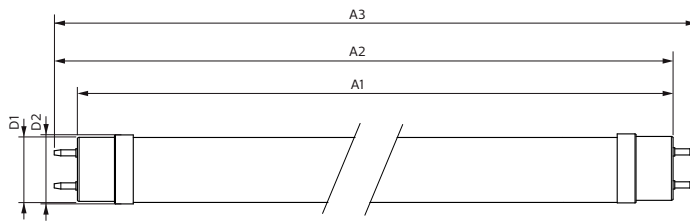
General Information		Power (Rated) (Nom)	
Cap base	G13 [Medium Bi-Pin Fluorescent]		14 W
EU RoHS compliant	Yes	Lamp current (max.)	66 mA
Nominal lifetime (nom.)	60000 h	Lamp current (min.)	60 mA
Switching cycle	200,000X	Starting time (nom.)	0.5 s
	Sphere	Warm-up time to 60% light (nom.)	0.5 s
		Power factor (nom.)	0.9
		Voltage (Nom)	220-240 V
Light Technical		Temperature	
Colour Code	830 [CCT of 3,000 K]	T-ambient (max.)	45 °C
Technical Beam Angle (Nom)	190 °	T-ambient (min.)	-20 °C
Lamp Luminous Flux 25°C EL (Nom)	2000 lm	T storage (max.)	65 °C
Colour Designation	White (WH)	T storage (min.)	-40 °C
Colour Temperature, horizontal (Nom)	3000 K	T-Case maximum (nom.)	60 °C
Lamp Luminous Efficacy EM (Nom)	142.00 lm/W	Controls and Dimming	
Colour consistency	<6	Dimmable	No
Colour Rendering Index,horiz (Nom)	80	Mechanical and Housing	
LLMF at end of nominal lifetime (nom.)	70 %	Lamp Finish	Frosted
Operating and Electrical			
Input frequency	50 to 60 Hz		

Master Value LEDtube T8

Bulb material	Glass
Product length	1200 mm
Bulb shape	Tube, double-ended
Approval and Application	
Energy Efficiency Class	D
Energy-saving product	Yes
Approval marks	RoHS compliance CE marking KEMA Keur certificate
Energy consumption kWh/1,000 hours	14 kWh 403612

Product Data	
Full product code	871869964685100
Order product name	MASTER LEDtube VLE 1200mm HO 14W 830 T8
EAN/UPC – product	8718699646851
Order code	929002021402
SAP numerator – quantity per pack	1
Numerator – packs per outer box	10
SAP material	929002021402
SAP net weight (piece)	0.215 kg

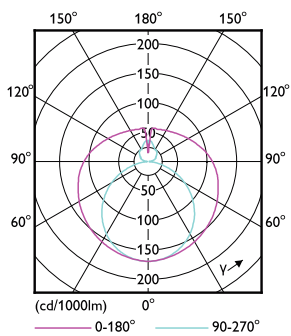
Dimensional drawing



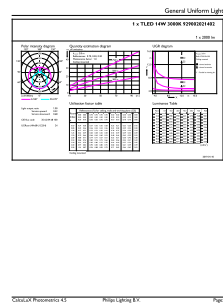
Product	D1	D2	A1	A2	A3
MASTER LEDtube VLE 1200mm HO 14W 830 T8	25.8 mm	28 mm	1198.2 mm	1205.3 mm	1212.4 mm

TLED 4ft 220-240V 14-36W2000lm 3000K G13

Photometric data



LEDtube 220-240V G13



LEDtube 220-240V G13 4ft 2000lm 3000k

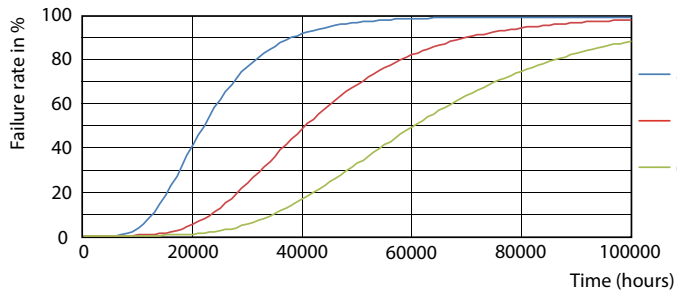
Master Value LEDtube T8

Photometric data

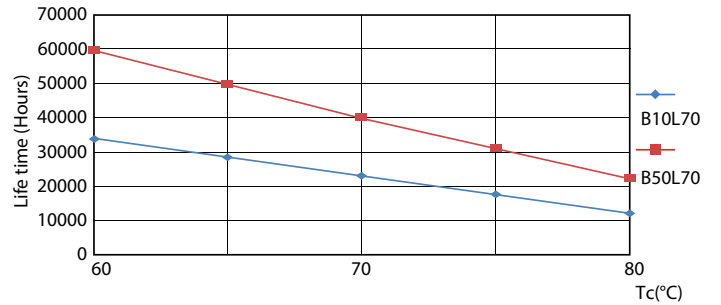


LEDtube 220-240V G13 3000k

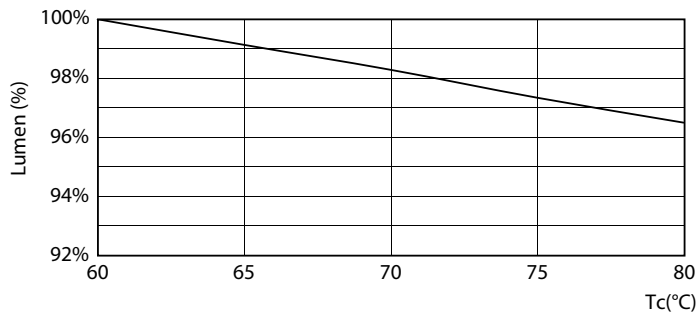
Lifetime



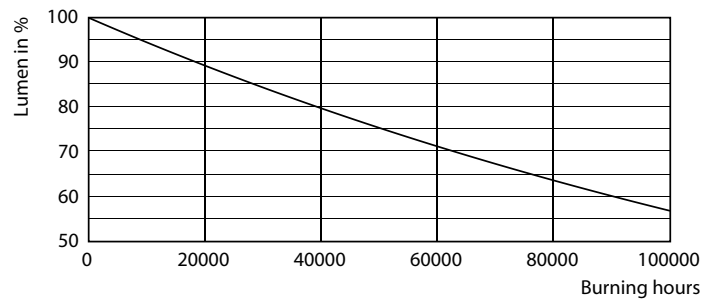
LEDtube MAS SLR 14W 60K FailureRate-LED



LEDtube MAS SLR 14W 60K LifetimeVsTc-LED



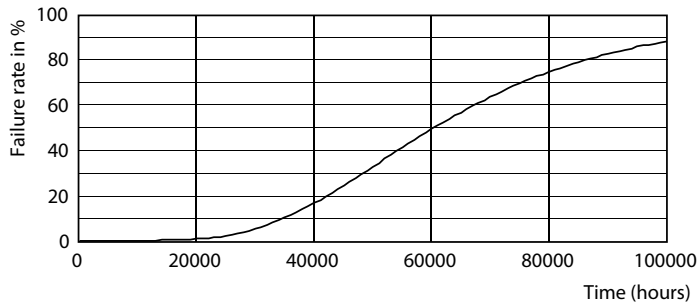
LEDtube MAS SLR 14W 60K LumenVsTc-LMP



LEDtube_60K

Master Value LEDtube T8

Lifetime



LEDtube_60K

