



MASTER LEDtube InstantFit HF T5

MAS LEDtube HF 1200mm HE 16.5W 865 T5

The Philips MASTER LEDtube integrates a LED light source into a traditional fluorescent form factor. Its unique design creates a perfectly uniform visual appearance, which cannot be distinguished from traditional fluorescent. These T5 lighting tubes are the right choice for absolute performance and are designed to stand up to everyday conditions. Unparalleled savings thanks to low energy consumption and an exceptionally long lifetime make these T5 LED tubes the choice for every demanding application.

Product data

General Information		LLMF At End Of Nominal Lifetime (Nom)	
Cap-Base	G5 [G5]		70 %
Nominal lifetime	60,000 hour(s)	Photobiological safety according to EN 62471 RGO	
Switching Cycle	50,000	Operating and Electrical	
Lighting Technology	LED	Line Frequency	30K to 100K Hz
Flux measurement reference	Sphere	Input Frequency	30K to 100K Hz
CE mark	Yes	Power Consumption	16.5 W
EU RoHS compliant	Yes	Starting Time (Nom)	0.5 s
		Warm-up time to 60% light	0.5 s
		Power Factor (Fraction)	0.92
		Voltage (Nom)	70-120 V
		LED alternative to fluorescent lamp power	28 W
Light Technical		Temperature	
Color Code	865 [CCT of 6500K]	Ambient temperature range	-20 °C to 45 °C
Beam Angle (Nom)	200 degree(s)	T-Case Maximum (Nom)	65 °C
Luminous Flux	2,500 lumen		
Color Designation	Cool Daylight		
Correlated Color Temperature (Nom)	6500 K		
Luminous Efficacy (rated) (Nom)	151 lm/W		
Color Consistency	<6		
Color rendering index (CRI)	80		

MASTER LEDtube InstantFit HF T5

Controls and Dimming

Dimmable	Yes - Check ballast compatibility
----------	-----------------------------------

Mechanical and Housing

Bulb Finish	Frosted
Bulb Material	Glass
Product Length	1,200 mm
Bulb Shape	Tube, double-ended

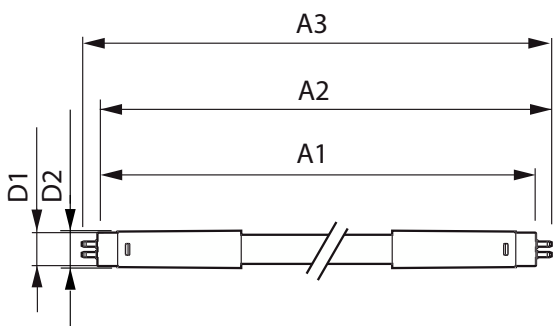
Approval and Application

Energy Efficiency Class	D
Energy Saving Product	Yes
Approval Marks	RoHS compliance TUV CE marking KEMA Keur certificate
Energy Consumption kWh/1000 h	17 kWh
EPREL Registration Number	1384136

Product Data

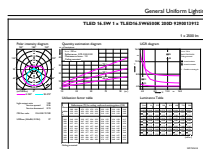
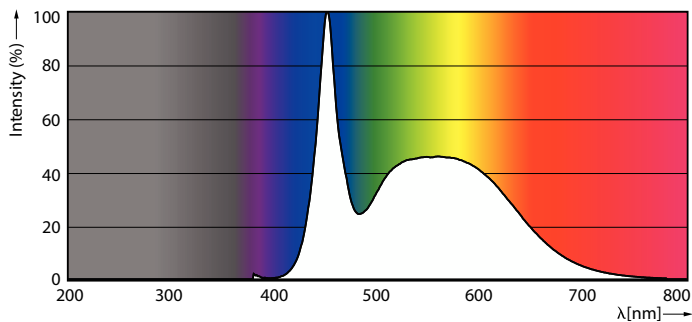
Full product code	871869674333100
Order product name	MAS LEDtube HF 1200mm HE 16.5W 865 T5
Order code	929001391202
Numerator - Quantity Per Pack	1
Numerator - Packs per outer box	10
Material Nr. (12NC)	929001391202
Full product name	MAS LEDtube HF 1200mm HE 16.5W 865 T5
EAN/UPC - Case	8718696743348
EAN/UPC - Product/Case	8718696743331

Dimensional drawing



Product	D1	D2	A1	A2	A3
MAS LEDtube HF 1200mm HE 16.5W 865 T5	15.5 mm	18.8 mm	1,149 mm	1,156.1 mm	1,163.2 mm

Photometric data



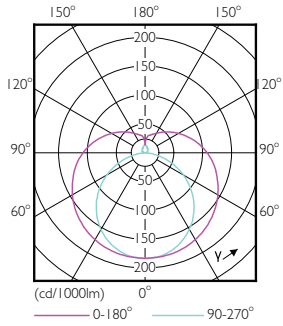
General uniform lighting - MAS LEDtube HF 1200mm HE 16.5W 865 T5

Spectral Power Distribution Colour - MAS LEDtube HF 1200mm HE 16.5W 865 T5

General uniform lighting - MAS LEDtube HF 1200mm HE 16.5W 865 T5

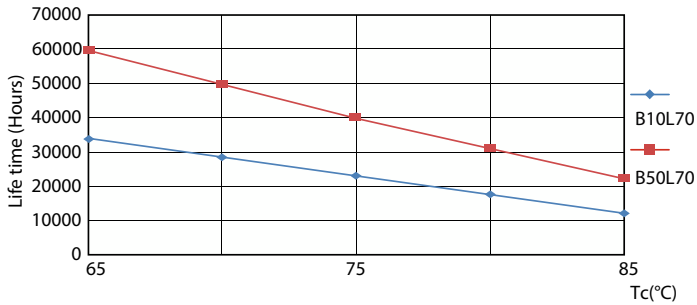
MASTER LEDtube InstantFit HF T5

Photometric data

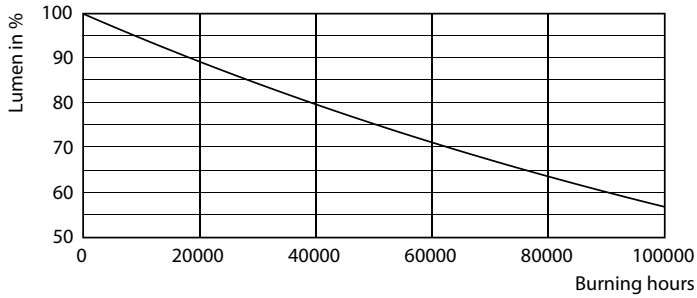


Light Distribution Diagram - MAS LEDtube HF 1200mm HE 16.5W 865 T5

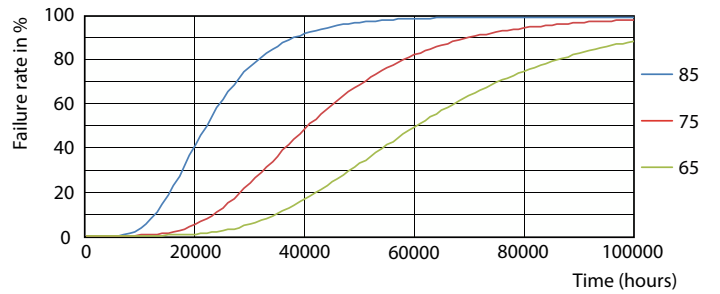
Lifetime



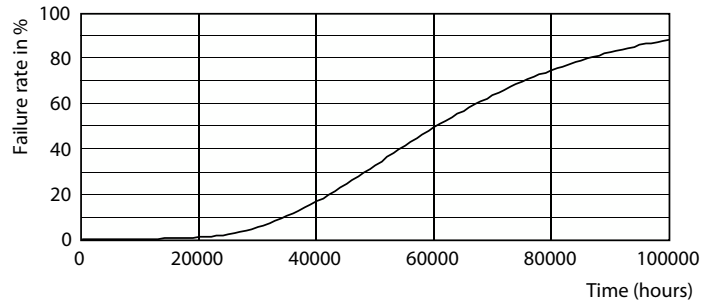
Life Expectancy Diagram - MAS LEDtube HF 1200mm HE 16.5W 865 T5



Lumen Maintenance Diagram - MAS LEDtube HF 1200mm HE 16.5W 865 T5



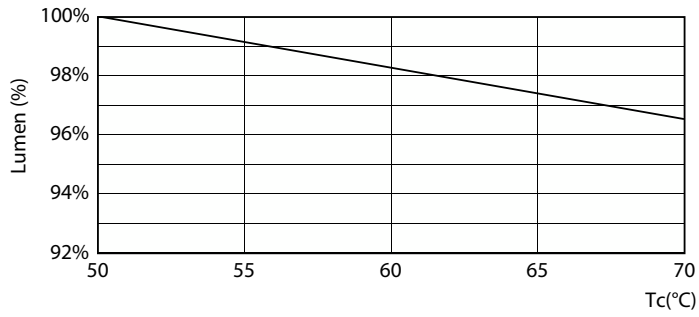
Life Expectancy Diagram - MAS LEDtube HF 1200mm HE 16.5W 865 T5



Life Expectancy Diagram - MAS LEDtube HF 1200mm HE 16.5W 865 T5

MASTER LEDtube InstantFit HF T5

Lifetime



Lumen Maintenance Diagram - MAS LEDtube HF 1200mm HE 16.5W 865 T5

