



MASTER LEDtube EM/ Mains T8

MAS LEDtube STD 1200mm 10.5W840 T8 I

The Philips MASTER LEDtube integrates a LED light source into a traditional fluorescent form factor. Its unique design creates a perfectly uniform visual appearance which cannot be distinguished from traditional fluorescent. This product is the ideal solution for up lighting in general lighting applications.

Warnings and Safety

• -

Product data

Operating and Electrical	
Line Frequency	50 to 60 Hz
Input Frequency	50 to 60 Hz
Power Consumption	10.5 W
Starting Time (Nom)	0.5 s
Warm-up time to 60% light	0.5 s
Power Factor (Fraction)	0.9
Voltage (Nom)	220-240 V

General Information	
Cap-Base	G13 [Medium Bi-Pin Fluorescent]
Nominal lifetime	50,000 hour(s)
Switching Cycle	200,000
Lighting Technology	LED

Light Technical	
Color Code	840 [CCT of 4000K]
Beam Angle (Nom)	160 degree(s)

Luminous Flux	1,600 lumen
Color Designation	Cool White (CW)
Correlated Color Temperature (Nom)	4000 K
Luminous Efficacy (rated) (Nom)	152.00 lm/W
Color Consistency	<6
Color rendering index (CRI)	83
LLMF At End Of Nominal Lifetime (Nom)	70 %

Temperature	
Ambient temperature range	-20 °C to 45 °C
T-Case Maximum (Nom)	35 °C

Controls and Dimming	
Dimmable	No

Mechanical and Housing	
Bulb Finish	Frosted
Bulb Material	Plastic

MASTER LEDtube EM/Mains T8

Product Length	1,200 mm
Bulb Shape	Tube, double-ended

Approval and Application

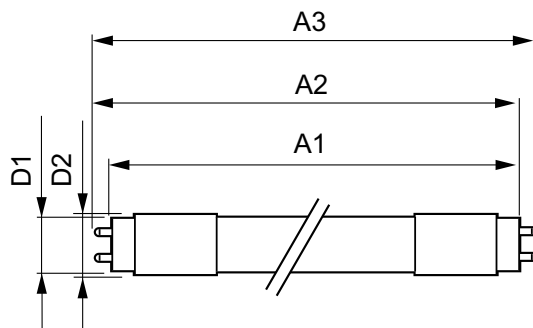
Energy Saving Product	Yes
Approval Marks	RoHS compliance
Energy Consumption kWh/1000 h	11 kWh
EU RoHS compliant	Yes

Product Data

Full product code	871869668768000
-------------------	-----------------

Order product name	MAS LEDtube STD 1200mm 10.5W840 T8 I
Order code	929001297608
Numerator - Quantity Per Pack	1
Numerator - Packs per outer box	10
Material number (12NC)	929001297608
Full product name	MAS LEDtube STD 1200mm 10.5W840 T8 I
EAN/UPC - Case	8718696687697

Dimensional drawing



Product	D1	D2	A1	A2	A3
MAS LEDtube STD 1200mm 10.5W840 T8 I	25.8 mm	28 mm	1,198.2 mm	1,205.3 mm	1,212.4 mm

Photometric data

