



# PrimaVision Power for CDM

## HID-PV C 150 /S CDM 220-240V 50/60Hz

PrimaVision Power gear is designed for optimal performance of 100 and 150 W CDM lamps – ideal where high-intensity light is key.

### Product data

| General information                            |              |
|--|--------------|
| Lamp type                                      | CDM          |
| Number of lamps                                | 1 piece/unit |
| Suitable for outdoor use                       | No           |
| Number of products on MCB (16 A type B) (nom.) | 6            |
| Automatic restart                              | Yes          |
| Operating and electrical                       |              |
| Input Voltage                                  | 220 to 240 V |
| Input frequency                                | 50 to 60 Hz  |
| Operating frequency (nom.)                     | 0.14 kHz     |
| Power factor 100% load (nom.)                  | 0.95         |
| Ignition voltage (max.)                        | 5.0 kV       |
| Ignition switch-off time (nom.)                | 20 min       |
| Mains voltage performance (AC)                 | -10%/+6%     |
| Mains voltage safety (AC)                      | -18%/+10%    |
| Earth leakage current (max.)                   | 0.35 mA      |
| Inrush current width                           | .50 ms       |
| Constant wattage deviation                     | -3%/+3%      |
| Power losses (nom.)                            | 10 W         |
| Inrush current peak (max.)                     | 50 A         |

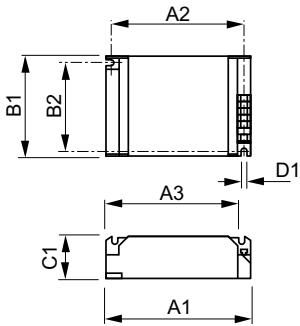
| Efficiency at full load [%]               | 93.2 %                    |
|---|---------------------------|
| Wiring                                    |                           |
| Cable capacity output wires mutual (nom.) | 200 pF                    |
| Cable length from device to lamp          | 2.0 m                     |
| Wire strip length                         | 10.0-11.0 mm              |
| Ballast contact wire cross section        | 0.50-2.50 mm <sup>2</sup> |
| Connector type                            | Insert                    |
| System characteristics                    |                           |
| Rated ballast-lamp power                  | 150 W                     |
| Temperature                               |                           |
| T-ambient (max.)                          | 60 °C                     |
| T-ambient (min.)                          | -20 °C                    |
| T storage (max.)                          | 85 °C                     |
| T storage (min.)                          | -25 °C                    |
| T-case lifetime (nom.)                    | 75 °C                     |
| T-case lifetime (nom.)                    | 75 °C                     |
| T-Case maximum (max.)                     | 85 °C                     |

## PrimaVision Power for CDM

| Mechanical and housing        |  |
|-------------------------------|--|
| Housing                       | /S   |
| Approval and application      |  |
| Active temperature protection | Yes  |
| EMI 9 kHz ... 300 MHz         | CISPR 15 ed 7.2  |
| Vibration standard            | IEC60068-2-6 F c   |
| Bumps standard                | IEC 60068-2-29 Eb  |
| Approval marks                | F-Marking CE marking VDE certificate<br>VDE-EMV certificate CB Certificate |
| Humming and noise level       | Inaudible  |

| Product data                      |   |
|-----------------------------------|---|
| Full product code                 | 871150091052330                         |
| Order product name                | HID-PV C 150 /S CDM 220-240V<br>50/60Hz |
| EAN/UPC – product                 | 8711500910523                           |
| Order code                        | 913700614066                            |
| SAP numerator – quantity per pack | 1                                       |
| Numerator – packs per outer box   | 12                                      |
| SAP material                      | 913700614066                            |
| Net Weight (Piece)                | 0.360 kg                                |

### Dimensional drawing



HID-PV C 150 /S CDM 220-240V 50/60Hz

| Product             | D1     | C1   | A1    | A2    | B1   | B2   |
|---------------------|--------|------|-------|-------|------|------|
| HID-PV C 150 /S CDM | 4.8 mm | 32.0 | 135.0 | 123.5 | 75.0 | 63.5 |
| 220-240V 50/60Hz    |        | mm   | mm    | mm    | mm   | mm   |

