



Smart Post-top G3

BGP161 LED2300/WW PSU 220-240V 7043

2300 lm - 27 W - 3000 K

Smart Post Top G3 inherits the classic look and style of the previous generation with improved system efficacy and light quality.;The Smart Post Top G3 optimised optical design increases both horizontal and vertical uniformity. The highly efficient thermal system design ensures maximum heat transfer and longer LED service life.;This reliable luminaire system operates well in both low and high temperature environments. It offers more than 11 years expected life, reducing maintenance frequency and cost (based on a 50,000 hour rated life and 12 hours operation per day);It provides a comfortable and safe atmosphere to gardens, residential areas, courtyards, side streets, squares, parks & playgrounds.

Product data

General Information	
Lamp family code	-
Lamp colour code	Warm white
Light source replaceable	Yes
Number of gear units	1 unit
Driver/power unit/transformer	PSU [Power supply unit]
Driver included	Yes
Optical cover/lens type	Acrylate cover and semi-matt high-reflective optic
Luminaire light beam spread	-
Control interface	-
Connection	Flying leads/wires
Cable	Cable 450 mm without plug
Protection class IEC	Safety class I (I)
Flammability mark	NO [-]
CE mark	-

ENEC mark	-
Warranty period	3 years
Optic type outdoor	Symmetrical
Constant light output	No
Number of products on MCB (16 A type B)	-
EU RoHS compliant	Yes
Light source engine type	LED

Light Technical

Upward light output ratio	0
Standard tilt angle post-top	-
Standard tilt angle side entry	-

Operating and Electrical

Input Voltage	220 to 240 V
Input frequency	50 to 60 Hz

Smart Post-top G3

Inrush current	2.1 A
Inrush time	22.3 ms
Power factor (min.)	0.9

Controls and Dimming

Dimmable	No
----------	----

Mechanical and Housing

Housing material	Aluminum die-cast
Reflector material	Acrylate
Optic material	Acrylate
Optical cover/lens material	Acrylate
Fixation material	Stainless steel
Mounting device	60P [Post-top for diameter 60 mm]
Optical cover/lens shape	Flat
Optical cover/lens finish	Frosted
Overall height	265 mm
Overall diameter	578 mm
Colour	Dark Grey

Approval and Application

Ingress protection code	IP65 [Dust penetration-protected, jet-proof]
Mech. impact protection code	IK07 [2 J reinforced]
Surge protection (common/differential)	4/2 kV

Initial Performance (IEC Compliant)

Initial luminous flux (system flux)	2300 lm
Luminous flux tolerance	+/-10%
Initial LED luminaire efficacy	85.19 lm/W
Lamp colour temperature	3000 K
Colour Rendering Index	70
Initial chromaticity	SDCM>5
Initial input power	27 W
Power consumption tolerance	+/-10%

Application Conditions

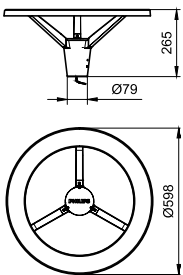
Ambient temperature range	-40 to +50 °C
Maximum dimming level	Not applicable

Product Data

Full product code	911401634103
Order product name	BGP161 LED2300/WW PSU 220-240V 7043
Order code	911401634103
SAP numerator – quantity per pack	1
Numerator – packs per outer box	2
SAP material	911401634103
SAP net weight (piece)	4.499 kg



Dimensional drawing



BGP161 LED2300/WW PSU 220-240V 7043

Smart Post-top G3

