



# Smart Post-top G3

## BGP161 LED2300/WW PSU 220-240V 9006

2300 lm - 27 W - 3000 K

Smart Post Top G3 inherits the classic look and style of the previous generation with improved system efficacy and light quality.;The Smart Post Top G3 optimised optical design increases both horizontal and vertical uniformity. The highly efficient thermal system design ensures maximum heat transfer and longer LED service life.;This reliable luminaire system operates well in both low and high temperature environments. It offers more than 11 years expected life, reducing maintenance frequency and cost (based on a 50,000 hour rated life and 12 hours operation per day);It provides a comfortable and safe atmosphere to gardens, residential areas, courtyards, side streets, squares, parks & playgrounds.

### Product data

| General Information           |  |
|-------------------------------|--|
| Lamp family code              | -  |
| Lamp colour code              | Warm white   |
| Light source replaceable      | Yes  |
| Number of gear units          | 1 unit   |
| Driver/power unit/transformer | PSU [ Power supply unit]                           |
| Driver included               | Yes  |
| Optical cover/lens type       | Acrylate cover and semi-matt high-reflective optic |
| Luminaire light beam spread   | -  |
| Control interface             | -  |
| Connection                    | Flying leads/wires                                 |
| Cable                         | Cable 450 mm without plug                          |
| Protection class IEC          | Safety class I (I)                                 |
| Flammability mark             | NO [ -]  |
| CE mark                       | -  |

|   |             |
|---|-------------|
| ENEC mark                               | -           |
| Warranty period                         | 3 years     |
| Optic type outdoor                      | Symmetrical |
| Constant light output                   | No          |
| Number of products on MCB (16 A type B) | -           |
| EU RoHS compliant                       | Yes         |
| Light source engine type                | LED         |

### Light Technical

|                                |   |
|--------------------------------|---|
| Upward light output ratio      | 0 |
| Standard tilt angle post-top   | - |
| Standard tilt angle side entry | - |

### Operating and Electrical

|                 |              |
|-----------------|--------------|
| Input Voltage   | 220 to 240 V |
| Input frequency | 50 to 60 Hz  |

## Smart Post-top G3

|                     |         |
|---------------------|---------|
| Inrush current      | 2.1 A   |
| Inrush time         | 22.3 ms |
| Power factor (min.) | 0.9     |

### Controls and Dimming

|          |    |
|----------|----|
| Dimmable | No |
|----------|----|

### Mechanical and Housing

|                             |                                    |
|-----------------------------|------------------------------------|
| Housing material            | Aluminum die-cast                  |
| Reflector material          | Acrylate                           |
| Optic material              | Acrylate                           |
| Optical cover/lens material | Acrylate                           |
| Fixation material           | Stainless steel                    |
| Mounting device             | 60P [ Post-top for diameter 60 mm] |
| Optical cover/lens shape    | Flat                               |
| Optical cover/lens finish   | Frosted                            |
| Overall height              | 265 mm                             |
| Overall diameter            | 578 mm                             |
| Colour                      | Grey                               |

### Approval and Application

|  |   |
|--|---|
| Ingress protection code                | IP65 [ Dust penetration-protected, jet-proof] |
| Mech. impact protection code           | IK07 [ 2 J reinforced]                        |
| Surge protection (common/differential) | 4/2 kV  |

### Initial Performance (IEC Compliant)

|                                     |            |
|-------------------------------------|------------|
| Initial luminous flux (system flux) | 2300 lm    |
| Luminous flux tolerance             | +/-10%     |
| Initial LED luminaire efficacy      | 85.19 lm/W |
| Lamp colour temperature             | 3000 K     |
| Colour Rendering Index              | 70         |
| Initial chromaticity                | SDCM>5     |
| Initial input power                 | 27 W       |
| Power consumption tolerance         | +/-10%     |

### Application Conditions

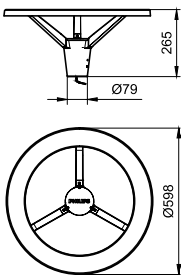
|                           |                |
|---------------------------|----------------|
| Ambient temperature range | -40 to +50 °C  |
| Maximum dimming level     | Not applicable |

### Product Data

|                                   |                                     |
|-----------------------------------|-------------------------------------|
| Full product code                 | 911401633503                        |
| Order product name                | BGP161 LED2300/WW PSU 220-240V 9006 |
| Order code                        | 911401633503                        |
| SAP numerator – quantity per pack | 1                                   |
| Numerator – packs per outer box   | 2                                   |
| SAP material                      | 911401633503                        |
| SAP net weight (piece)            | 4.499 kg                            |



## Dimensional drawing



BGP161 LED2300/WW PSU 220-240V 9006

## Smart Post-top G3

