



Product Description

Plusline Compact

Mains-voltage linear lamp giving white halogen light

Benefits

- Bright halogen light
- Long lifetime

Features

- Clear tubular quartz bulb
- Reinforced filament supports for maximum safety and shock resistance resulting in longer lifetime
- Two arc-preventing fuses for greater safety
- Excellent colour rendering
- Constant light output during life

Application

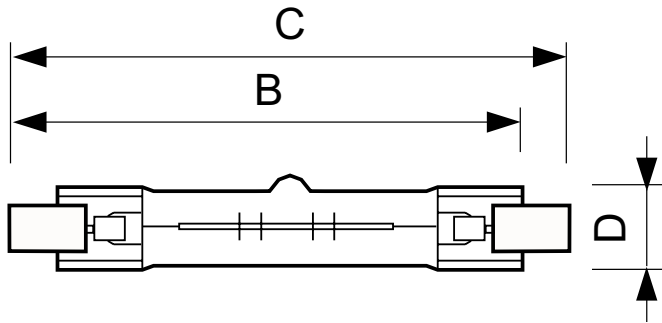
- Typically used in shop lighting applications
- Indoor: homes, offices, shops and museums
- Outdoor: billboards, car parks, security lighting and construction sites

Versions



Plusline Compact

Dimensional drawing



| Product | D (max) | B (max) | B | B (min) | C (max) |
|---|---------|---------|---------|---------|---------|
| Plusline C 150W R7s 230V 1CT/ 10X10F | 15 mm | 76.5 mm | 74.9 mm | 73.3 mm | 78.3 mm |

