



# The new generation of energy saving tube lighting

## MASTER LEDtube InstantFit HF T8

The Philips MASTER LEDtube integrates a LED light source into a traditional fluorescent form factor. Its unique design creates a perfectly uniform visual appearance which cannot be distinguished from traditional fluorescent. This product is the ideal solution for up lighting in general lighting applications.

### Benefits

- Reduced operational cost thanks to lower energy consumption
- Lower maintenance cost thanks to 2-3 times longer lifetime than normal fluorescent tubes
- The fastest and easiest way to upgrade existing luminaires to LED technology, with a 100% safe installation process

### Features

- Only 50% energy consumption compared to fluorescent tubes
- Extra-long life of 50,000 hours
- Retrofit to existing T8 lamps on EM ballast installations
- Full safety features and EM Protector safety device
- No mercury

### Application

- The ideal solution for very demanding applications with the highest lumen output requirements while saving on energy bills: office, school, retail & industry, healthcare applications

### Warnings and Safety

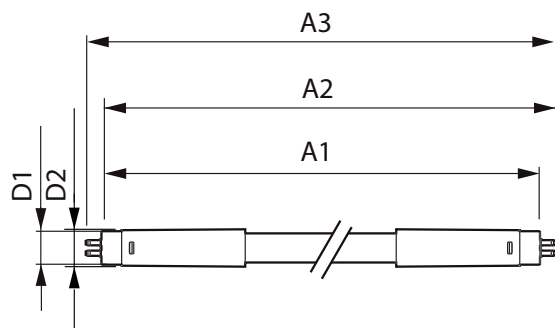
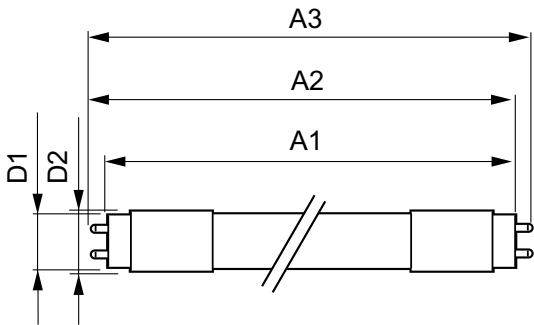
- NOTES: The overall energy efficiency and light distribution of any installation that uses these lamps are determined by the design of the installation.

# MASTER LEDtube InstantFit HF T8

## Versions



## Dimensional drawing



Product	D1	D2	A1	A2	A3
MASTER LEDtube HF 1200mm HO 14W865 T8	25.6 mm	28 mm	1198.1 mm	1205.2 mm	1212.3 mm
MASTER LEDtube HF 1500mm HO 20W840 T8	25.6 mm	28 mm	1498.7 mm	1505.8 mm	1512.9 mm
MASTER LEDtube HF 1200mm HO 14W840 T8	25.6 mm	28 mm	1198.1 mm	1205.2 mm	1212.3 mm
MASTER LEDtube HF 1200mm HO 14W830 T8	25.6 mm	28 mm	1198.1 mm	1205.2 mm	1212.3 mm

Product	D1	D2	A1	A2	A3
MASTER LEDtube HF 600mm HO 8W830 T8	25.6 mm	28 mm	588.6 mm	595.7 mm	602.8 mm
MASTER LEDtube HF 600mm HO 8W865 T8	25.6 mm	28 mm	588.6 mm	595.7 mm	602.8 mm
MASTER LEDtube HF 600mm HO 8W840 T8	25.6 mm	28 mm	588.6 mm	595.7 mm	602.8 mm

# MASTER LEDtube InstantFit HF T8

## Controls and Dimming

Dimmable	No
----------	----

## Operating and Electrical

Starting Time (Nom)	0.5 s
---------------------	-------

## General Information

Cap-Base	G13 ROT (Rotating)
----------	-----------------------

Nominal Lifetime (Nom)	60000 h
------------------------	---------

Switching Cycle	50,000X
-----------------	---------

## Light Technical

Beam Angle (Nom)	160 °
------------------	-------

Colour Rendering Index (Nom)	83
------------------------------	----

Llmf At End Of Nominal Lifetime (Nom)	70 %
---------------------------------------	------

## Mechanical and Housing

Bulb Shape	Tube, double-ended
------------	--------------------

## Temperature

T-Ambient (Max)	45 °C
-----------------	-------

T-Ambient (Min)	-20 °C
-----------------	--------

T-Storage (Max)	65 °C
-----------------	-------

T-Storage (Min)	-40 °C
-----------------	--------

## Approval and Application

Order Code	Full Product Name	Energy Consumption kWh/1000 h
929001284102	MASTER LEDtube HF 1200mm HO 14W840 T8	14 kWh
929001284202	MASTER LEDtube HF 1200mm HO 14W865 T8	14 kWh
929001284302	MASTER LEDtube HF 1200mm HO 14W830 T8	14 kWh
929001284402	MASTER LEDtube HF 1500mm HO 20W840 T8	20 kWh
929001393102	MASTER LEDtube HF 600mm HO 8W830 T8	8 kWh
929001393202	MASTER LEDtube HF 600mm HO 8W840 T8	8 kWh
929001393302	MASTER LEDtube HF 600mm HO 8W865 T8	8 kWh

## Operating and Electrical

Order Code	Full Product Name	Input Frequency	Voltage (Nom)	Power (Rated) (Nom)
929001284102	MASTER LEDtube HF 1200mm HO 14W840 T8	20000-75000 Hz	30-80 V	14 W
929001284202	MASTER LEDtube HF 1200mm HO 14W865 T8	20000-75000 Hz	30-80 V	14 W
929001284302	MASTER LEDtube HF 1200mm HO 14W830 T8	20000-75000 Hz	30-80 V	14 W

Order Code	Full Product Name	Input Frequency	Voltage (Nom)	Power (Rated) (Nom)
929001284402	MASTER LEDtube HF 1500mm HO 20W840 T8	20000-75000 Hz	30-80 V	20 W
929001393102	MASTER LEDtube HF 600mm HO 8W830 T8	20000-80000 Hz	20-50 V	8 W
929001393202	MASTER LEDtube HF 600mm HO 8W840 T8	20000-80000 Hz	20-50 V	8 W
929001393302	MASTER LEDtube HF 600mm HO 8W865 T8	20000-80000 Hz	20-50 V	8 W

## Light Technical

Order Code	Full Product Name	Correlated Colour		
		Colour Code	Temperature (Nom)	Luminous Flux (Nom)
929001284102	MASTER LEDtube HF 1200mm HO 14W840 T8	840	4000 K	2100 lm
929001284202	MASTER LEDtube HF 1200mm HO 14W865 T8	865	6500 K	2100 lm

Order Code	Full Product Name	Correlated Colour		
		Colour Code	Temperature (Nom)	Luminous Flux (Nom)
929001284302	MASTER LEDtube HF 1200mm HO 14W830 T8	830	3000 K	2000 lm

# MASTER LEDtube InstantFit HF T8

Order Code	Full Product Name	Colour Code	Correlated Colour	
			Temperature (Nom)	Luminous Flux (Nom)
929001284402	MASTER LEDtube HF 1500mm HO 20W840 T8	840	4000 K	3100 lm
929001393102	MASTER LEDtube HF 600mm HO 8W830 T8	830	3000 K	1000 lm

Order Code	Full Product Name	Colour Code	Correlated Colour	
			Temperature (Nom)	Luminous Flux (Nom)
929001393202	MASTER LEDtube HF 600mm HO 8W840 T8	840	4000 K	1050 lm
929001393302	MASTER LEDtube HF 600mm HO 8W865 T8	865	6500 K	1050 lm

## Temperature

Order Code	Full Product Name	T-Case Maximum (Nom)
929001284102	MASTER LEDtube HF 1200mm HO 14W840 T8	55 °C
929001284202	MASTER LEDtube HF 1200mm HO 14W865 T8	55 °C
929001284302	MASTER LEDtube HF 1200mm HO 14W830 T8	55 °C
929001284402	MASTER LEDtube HF 1500mm HO 20W840 T8	55 °C
929001393102	MASTER LEDtube HF 600mm HO 8W830 T8	60 °C
929001393202	MASTER LEDtube HF 600mm HO 8W840 T8	60 °C
929001393302	MASTER LEDtube HF 600mm HO 8W865 T8	60 °C

